



**TIGER**  
TRAINERS

















# CONTENTS

Introduction	6
Tiger in Profile	8
Sustainability	12
New Products and Services	14
Tiger Trailers' Heritage	16
Customer Experience	20
Design and Innovation	22
Product Range	26
Curtainsider	30
Case study: British Gypsum	38
Box Van	42
Case study: Poundland	50
Fixed Deck Double Deck	54
Case study: B&M (including Tiger Trailers Deck Pod™)	62
Moving Deck Double Deck	66
Case study: Morrisons	74
Rigid Bodywork	80
Case study: Hovis	88
Tiger Siberian Temperature-Controlled Range	92
Swap-Body Systems	100
Case study: Wren Kitchens	108
Specialist	112
Tiger Trailers Deck Pod™	116
Personalisation	122
Tiger Rentals	132
Tiger Finance	138
Aftercare	140





## Making Tracks

# An exciting future

We welcome you to the latest edition of our corporate publication. Since the last release in 2018, we have had a fantastic time growing the business, releasing new products and enhancing the services we offer, to establish Tiger Trailers as a leading supplier to the transport sector.

Early 2019 saw us move the factory and head office to a brand new building on a 20-acre site in Winsford, Cheshire, creating the most modern commercial vehicle bodywork and trailer manufacturing facility in the UK, with all manufacturing under one roof, enabling us to offer a unique customer experience in our industry. This fantastic site provides the platform for the future growth of the business.

Tiger's product range is the key to our continued success and has enabled us to become a key partner to many household names, providing supply chain solutions to leading logistics, retail and parcel delivery businesses. We have continued to expand the product range and services we offer, with the launch of our Tiger Siberian range of products in 2020, offering temperature-controlled bodywork and trailer solutions to food retail, manufacturing and 3PL logistics fleet operators.

Complementing this, we launched Tiger Rentals, offering a diverse fleet of standard and Double Deck Trailers for short and long term hire. This, with our team of people in Tiger Finance, enable us to provide innovative rentals and funding solutions for our customers.

All of this means we are well set for the future growth of the business, as we continue to provide high quality products and a range of services to the industry.

We would like to thank the whole Tiger Trailers team, as well as our customers, suppliers and partners, for their continued support. We really do have an exciting future ahead.

**John & Steven Cartwright**  
Joint Managing Directors







**John**



**Steven**







## TIGER IN PROFILE | THE COMPANY

# Founded on a wealth of experience

Tiger was established in 2014 by John and Steven Cartwright, founders and Joint Managing Directors, along with David Williams as Chairman. Between them, they possess a vast knowledge of the motor transport industry.

Both John and Steven worked from school age in the family business, S Cartwright and Sons Ltd, for more than 30 years before founding Tiger Trailers. David worked as Managing Director at TDG for 24 years ahead of founding Great Bear Distribution in 1994, which he subsequently sold in 2016. John and Steven's father Alan was a good friend of David's and supplied the first Cartwright trailers to Great Bear Distribution.

Working together over the last 7 years as the shareholders of the business, John, Steven and David have grown Tiger into what is now a circa £50m per annum turnover business, supplying blue chip companies in the parcel, retail and logistics sectors.



'Tiger 1', our first home (2014-2018)





Groundbreak, 2018: [L to R] Steven & John Cartwright, David Williams, and Joyce Cartwright (John and Steven's mother)



'Tiger 2', our new purpose-built site (2018 on)







## TIGER IN PROFILE | THE OPERATION

# Efficient. Modern. Innovative.

Tiger Trailers' continuous improvement programme has brought about a series of milestone advancements since the company's formation in 2014, culminating in its move to a brand new, purpose-built facility.

Tiger Trailers is now one of the UK's leading trailer and bodywork manufacturers. The company's ethos is to provide customers with innovative design solutions, high build quality and a collaborative, personal service.

All processes from chassis fabrication and body assembly to paint and final finish are encompassed under one roof.







Tiger Trailers has continued to innovate and expand its profile, bringing Tiger Finance, Tiger Rentals and Tiger Siberian temperature-controlled solutions to the company's product and services portfolio.

## Purpose-built facilities

Tiger Trailers operates from a 168,000 sq ft state-of-the-art manufacturing facility with a specialist training area, 3D engineering suite and product showroom. The factory has benefited from investment in robotic welding and new paint and shot-blast facilities.

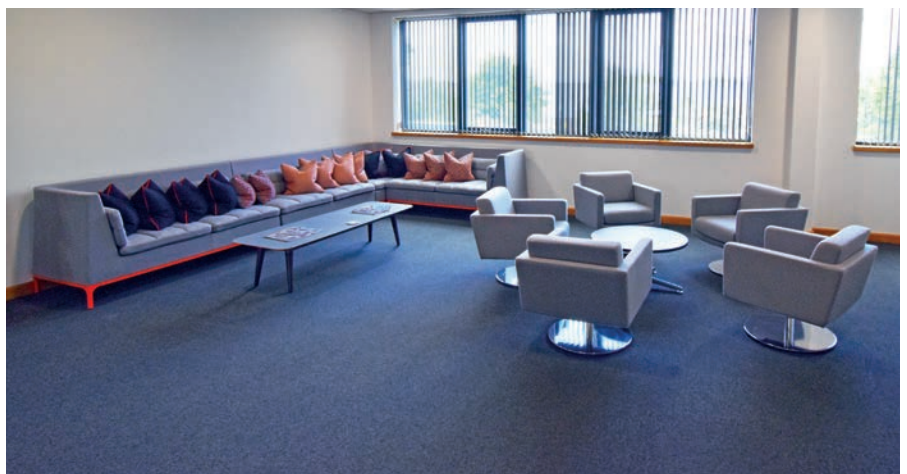


## Innovation & technology

From being the first UK manufacturer to design and offer a Moving Deck Double Deck Trailer with a 52-pallet capacity, followed by continuous engineering achievements such as the development of its Lightweight Clearspan Curtainsider Trailer and Captive Rave load restraint system, innovation is a core characteristic of Tiger Trailers' culture.



Technology plays a key role in both enabling such innovations and in maintaining the company's customer focus. Significant investment in IT systems and the introduction of virtual reality technology to the customer experience emphasise Tiger Trailers' forward-thinking vision.







## SUSTAINABILITY & ENVIRONMENT

# Green factory. Efficient products.

Proactively mindful of its operations' impact on the community and the environment, Tiger Trailers is proud to be part of the local and wider communities. It is the company's aim to create opportunities to recruit and develop local people and to understand the local issues that are important to the community and how it can support them.

Tiger Trailers has set a target of reducing tonnes of CO<sub>2</sub>e per £m of costs of sales by 5% per annum (based on the figures reported in the year ended 31 December 2020 of 748 tonnes of CO<sub>2</sub>e per £m of cost of sales) over the 5 years ending 31 December 2025.

The design of Tiger Trailers' new building utilises energy-efficient heat pump heating and cooling systems, with natural ventilation throughout supported by a super-

efficient heat recovery ventilation system employed within the offices, while gas-fired radiant heating is used in the production area.

Automated high-efficiency LED lighting installed in the offices and factory also contributes to the environmentally-friendly credentials of the manufacturer's site which, combined with the efficient construction techniques used, leads to an overall building rating of 'A'.



High-efficiency lighting



## Automotive, Mobility & Road Safety

Car-sharing is encouraged and supported through Tiger Trailers' HR department, and the firm's facilities include charge points for electric and plug-in hybrid vehicles.

Road safety has an important place in the company's ethos. The latest news, campaigns and innovative technology developments are considered in the Road Transport Hub on Tiger Trailers' website, and the company works with schools and other organisations to promote road safety to children, cyclists and others as part of its CSR activities.



## Recyclable, light & versatile products

Tiger Trailers manufactures sustainable products that simultaneously provide environmental benefits to end users and, ultimately, society as a whole, such as increased fuel efficiency and a reduction in CO2 emissions.

The innovative sidewall material used in the Double Deck Trailers Tiger builds for certain customers is recyclable and offers significant weight-saving properties alongside increased load capacity that is equivalent in some cases to two typical single-deck trailers.



Well-known brands reduce their fleets' impact with Tiger solutions







# TIGER IN PROFILE | THE COMPLETE SOLUTION

## Latest Products and Services

Tiger Trailers continuously evolves to meet its customers' changing needs in today's world of bespoke products, operational flexibility and technological innovation. This has led to the introduction of Tiger Finance, Tiger Rentals and the Tiger Siberian temperature-controlled range; strengthening the company's portfolio.



Since its launch, Tiger Rentals has rapidly established itself as an invaluable support to customers, offering short to long term rental flexibility across the full range of Curtainsider, Box Van, Double Deck and other trailer types.

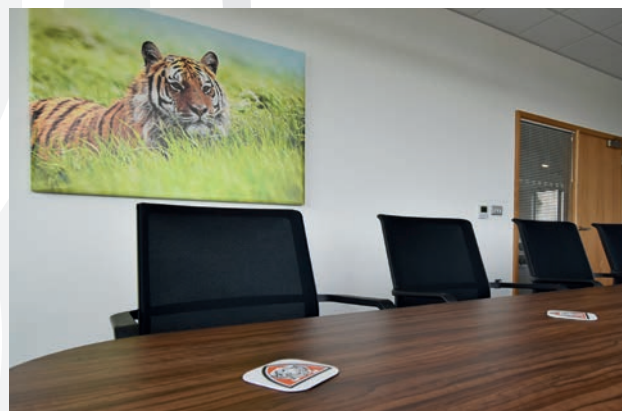


Tiger Rentals enables customers to trial the manufacturer's products before committing to purchasing or financing them.

With sites in both the north west and south west, Tiger Rentals is well-equipped to react quickly to clients' rental requirements.



Tiger Finance was formed to remove the traditional separation between trailer manufacturer and funding solutions. As a result, it presents customers with one of the most cohesive options on the market.



The team behind Tiger Trailers' in-house finance solution are highly experienced specifically in funding for the transport and logistics sector and have facilitated the acquisition of more than 30,000 trailers. Tiger Finance's solutions typically focus around:

- Operating lease
- Finance lease
- Hire purchase





# TIGER SIBERIAN

## Temperature-Controlled

2020 saw the launch of the Tiger Siberian range of temperature-controlled products. Combining the experience of two of Europe's leading trailer manufacturers, Tiger Siberian brings a range of temperature-controlled trailer and Rigid Bodywork to the UK; designed to suit logistics, 3PL and retail operations.

With more than 30 years' experience in the design and manufacture of temperature-controlled bodywork, the Tiger Siberian range spans from various rigid bodywork sizes through to 44t Double Deck Trailers.

All processes are done in house, including panel manufacturing, assembly, body and fridge unit fitment. Robotic welding is deployed in the manufacture of each chassis, to ensure consistency of weld and maximum production efficiency.

Tiger Siberian offers a complete product range, certified to ATP standards, and each product can be tailored to the exact requirements of the customer.

- Refrigerated Rigid Bodywork
- Refrigerated Box Van Trailer
- Refrigerated Double Deck Trailer

Certain Tiger Siberian products are available on short to long term hire through Tiger Rentals.







# The heritage of Tiger Trailers

Tiger Trailers is built upon a strong family history of manufacturing trailers and rigid bodies for the commercial vehicle sector. Joint Managing Directors, John and Steven Cartwright, each bring more than 40 years of experience in the industry.

Alan Cartwright, the much-loved father of John and Steven, began building timber-framed vehicle bodies in 1952, alongside his father, Stanley Cartwright, under the name S. Cartwright & Sons.

Alan grew the business throughout the 1960's and 1970's. It soon became well known for designing and building quality bodywork and was well respected in the industry. John and Steven worked alongside their father, joining the business in 1983 and 1984 respectively, and for 30 years continued to help build the company into a major UK manufacturer.

Alan sadly passed away in 2011. In 2014, John and Steven left the business and founded Tiger Trailers, with a vision to create the most advanced trailer and bodywork manufacturing facility in the UK.



Alan Cartwright



A young Stanley Cartwright  
(back row, second from the right)



One of Alan's 1960's coach-built bodies



A Williams Bros. curtainsider trailer from the 1980's





## Alan Cartwright Apprenticeship Awards

Alan Cartwright was one of the most respected coach and commercial vehicle bodybuilders in the UK transport industry.

In recognition of Alan's achievements – in particular the hard work and determination he showed when

building the family business – John and Steven, alongside their mother Joyce and sister Alison, set up The Alan Cartwright Foundation and The Alan Cartwright Apprenticeship Awards, which recognises Tiger's top-performing apprentices.







## TIGER TIMELINE

# Events shaping Tiger Trailers

### 2014

April — Tiger Trailers moves into its new factory in Winsford, Cheshire. The five-acre site, previously a distribution centre, was transformed into a modern manufacturing facility.

May — Tiger's Apprenticeship Scheme, developed alongside Mid-Cheshire College, is established.

June — Tiger welcomes the first members of its production staff.

August — Production begins.

October — The first trailers roll off the production line for CM Downton.

December — Tiger's first Double Deck trailers are delivered to B&M.

### 2015

March — After a successful trial, Tiger supplies its innovative Double Deck Wedge Trailer into AO.com's fleet. The trailers are able to accommodate double-stacked white goods on both decks - an industry first.

July — Tiger produces its first longer semi-trailers for W. E. Rawson.

August — Tiger delivers its first Rigid Body for TNT.

October — With 150 employees and more than 1,000 trailers and bodies on the road, Tiger Trailers celebrates its one-year manufacturing anniversary.

### 2016

September — Tiger increases its apprentice intake, with more than 20 apprentices based out of the Winsford factory.

November — Tiger releases the UK's first 52-pallet capacity moving deck Double Deck Trailer.

### 2017

February — Tiger 24/7 is launched, providing a dedicated aftersales service.

April — Tiger Trailers unveils plans for the UK's most advanced trailer and commercial vehicle body manufacturing facility, due to open by 2019.

July — Tiger Trailers' patented Double Deck Trailer design for AO.com is shortlisted for the Innovation category at the Motor Transport Awards 2017.

### 2018

February — Tiger Trailers joins the Northern Powerhouse Partnership.

March — Tiger finishes the installation of its first 'Tiger Trailers Deck Pod™' - a specialist double deck loading solution.

June — Construction work begins on new factory, less than 1 mile away.

December — New factory completes ready for manufacturing.





## 2019

- January — Tiger Trailers relocates to its new £22 million home, a 20-acre site featuring a 168,000 sq.ft. manufacturing and office facility under one roof.
- April — Tiger Trailers and Tata Steel partner to develop new Lightweight Clearspan Curtainsider Design.
- August — Tiger Finance launched to provide tailored financial solutions.
- October — Now with 200 employees and more than 6,000 trailers and bodies on the road.
- December — Apprentices are recognised by the Alan Cartwright Foundation Awards.

## 2020

- January — Tiger Rentals is launched, offering short to long-term rental across the full product range.
- April — Siberian temperature-controlled range launched.
- August — Tiger increases its market share of double deck manufacture with orders including many major retailers and parcel operators.

## 2021

Tiger Trailers' journey continues as it strengthens its product range and maintains its position as one of the UK and Europe's most innovative trailer and commercial vehicle body manufacturers.



May 2014: Tiger Trailers' original factory



October 2014: Tiger's first trailers produced for Downinton



November 2016: UK's first 52-pallet Moving Double Deck



January 2019: New factory opened



April 2020: Tiger Siberian temperature-controlled range launched





# CUSTOMER EXPERIENCE

Tiger Trailers approaches things very differently to other manufacturers, putting continuous consultation with the customer at the heart of the design process.



## Visiting the customer

Tiger Trailers believes the best way to assess a customer's requirements is to review their current logistics operation in detail in order to provide a complete design solution.



## Designing the solution

Following Tiger's team visiting the customer's site, specifications along with an outline sales drawing are provided to establish Tiger's proposal to manufacture the required product.



## Collaborative consultation

Customers are invited to view 3D models of Tiger's design proposals, created in powerful SolidWorks™ 3D design software and harnessing Computational Fluid Dynamics (CFD) technology.



## Manufacturing the product

Manufactured in a state-of-the art facility, every Tiger Trailers product receives stringent quality analysis at each stage of the build. Tiger's dedicated production updates ensure that the customer can follow the progress of their order from start to finish.





## Customer visits

Tiger welcomes customer visits at key stages during manufacture, providing the opportunity to evaluate work in progress, discuss the project with sales, engineering and other teams, and plan the potential addition of different products at a later date.



## Showroom handover

Every customer is invited to the factory for the handover of their completed order, viewing the finished product and experiencing its operation in detail in the indoor showroom.



## Collection and delivery

Tiger's customers are given the choice of delivery or collection, the latter presenting the opportunity to meet drivers and other key personnel, and for high quality photographs to be taken.



## Aftercare

Customers can be confident of ongoing support through Tiger's dedicated aftersales service covering warranty, parts, servicing, repairs, training and rental across the UK and Europe.

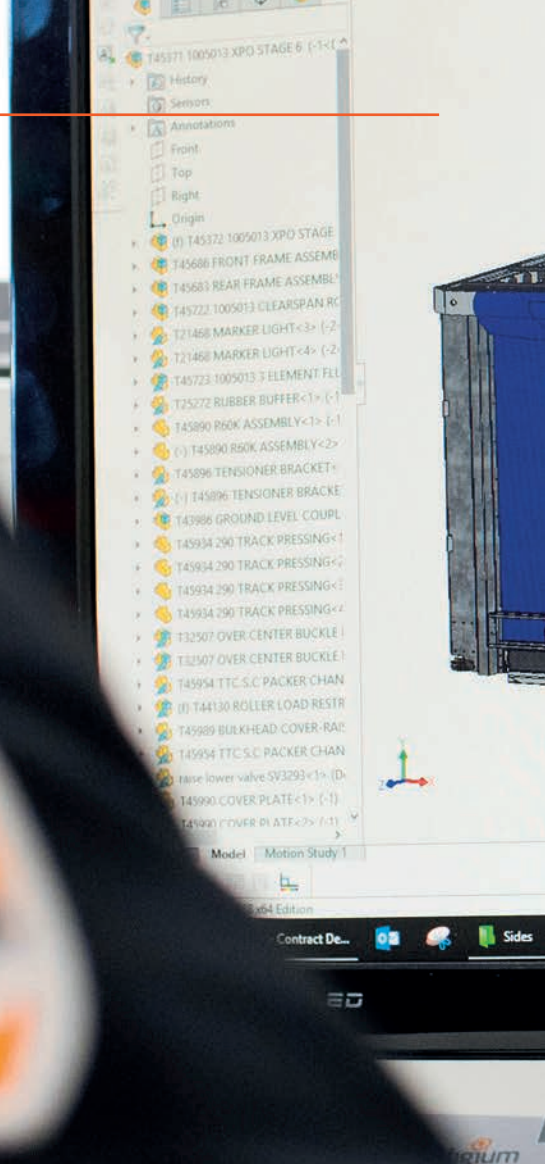




# DESIGN AND INNOVATION

## A fresh approach

Tiger Trailers is a design-led business, comprising a team that genuinely thrives on engineering challenges. The company's ethos is to combine extensive design and engineering knowledge with the latest manufacturing techniques, all set within the most modern trailer and truck body factory in the UK.

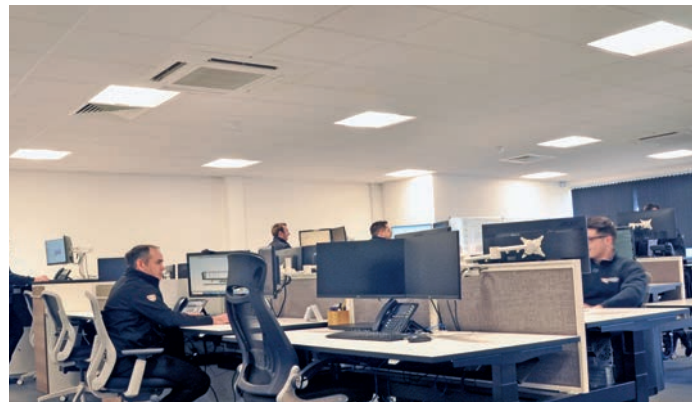


### Engineering Solutions

Tiger Trailers' innovative design and engineering department always places customers' requests at the forefront of new product development. Engineering and sales teams work closely alongside each other to ensure client requirements are consistently met, with the company's internal order review process safeguarding these elements through each stage of manufacture.

Once an order is placed, Tiger immediately assigns a project engineer, whose job it is to follow the entire build process, from design and manufacturing, right through to final sign off. They keep in close contact with the sales team throughout every stage of the build.

From the outset, the design and engineering process utilises the powerful 3D Solidworks™ programme, which means every aspect of the design can be accurately produced before manufacturing begins. This initial attention to even the most minute detail helps to enable a smooth build process.







Clients are invited to Tiger's factory in Winsford, Cheshire, to view technical drawings and 3D models of their order prior to manufacture. This ensures that all aspects of the design are confirmed to meet the client's individual requirements prior to build commencing.

Whilst many designs are generally variations on what could be considered a standard Tiger product, a 'blank sheet of paper' approach can also be adopted to deliver a completely unique design if required. Any number of options from Tiger's 'Personalisation' range can be chosen, right through to the design and manufacture of highly specialised products.







## ‘Captive Rave’ load-securing system

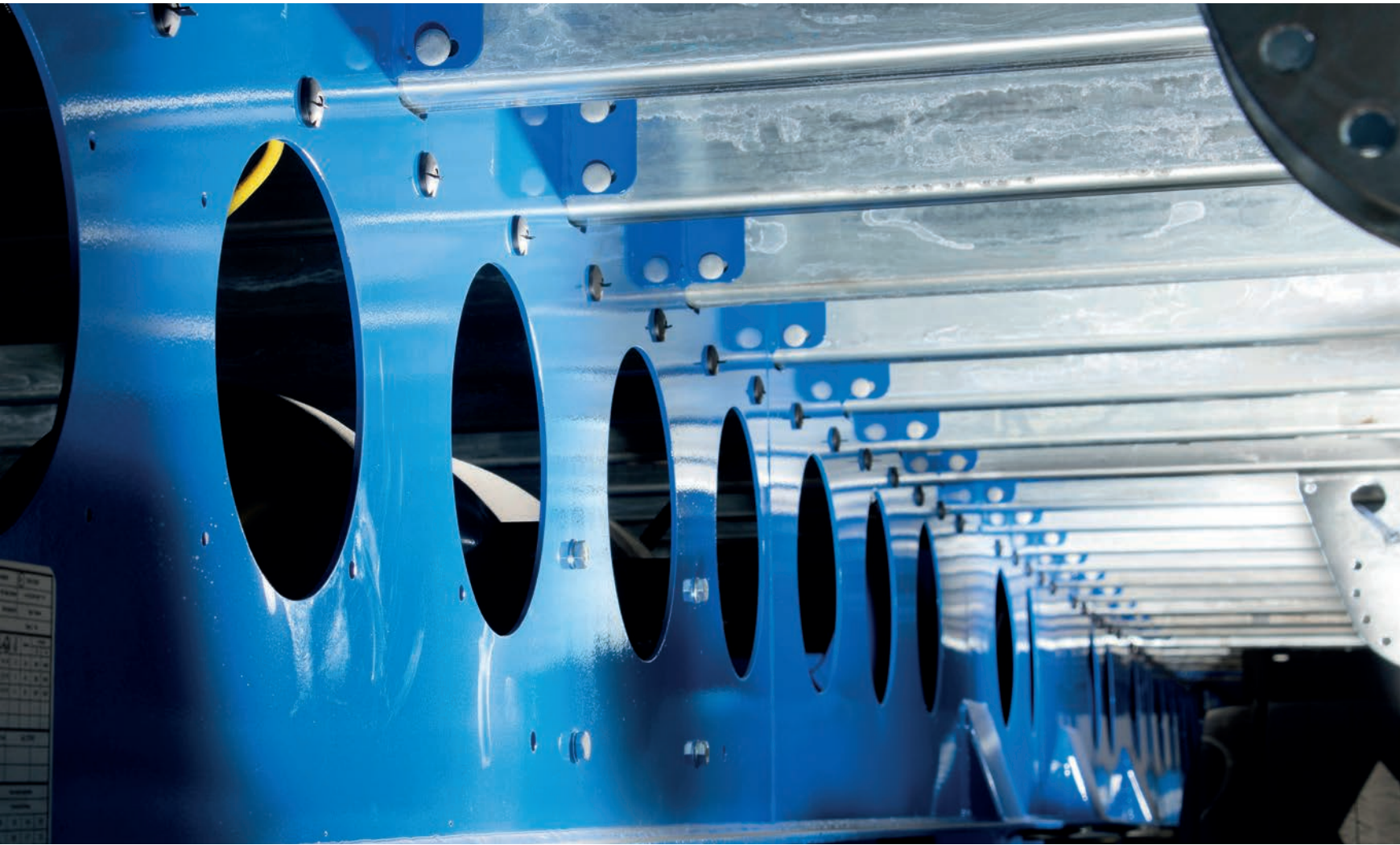
Tiger Trailers’ engineers created an innovative load securing system called ‘Captive Rave’ (patent applied for). Replacing a traditional ‘hook’ strap approach, this roof-mounted system features ratchets stored individually inside the rear doors, with the straps ‘captive’ throughout the process, greatly reducing potential injury.

The front curtain tensioner is uniquely recessed and positioned closer to the outside of the trailer, while the load securing straps are also lockable for greater load stability and security.

Reducing curtain tensioning by 50% to just 13, customers benefit from operational efficiency gains.







## Lightweight Clearspan Curtainsider

Tiger Trailers and Tata Steel partnered to develop the Lightweight Clearspan Curtainsider, which is 500kg lighter than conventional iterations, allowing customers to carry a payload of up to 29.5 tonnes.

Tata Steel's Advanced Engineering team at the University of Warwick worked alongside Tiger Trailers, utilising finite element analysis (FEA) and using steel components twice the strength but without any additional weight (Tata Steel Ympress® S700MC and Metallic Coated S450 GD), to develop one of the lightest tri-axle clearspan Curtainsider trailers currently available in the UK.

The project has brought a greater level of sustainability to the commercial vehicle sector, with an increased percentage of recyclable material at end of life.







# Tiger Trailers' Product Range

Tiger Trailers' comprehensive portfolio is designed to meet the diverse requirements of today's operators.

## CURTAINSIDER



## BOX VAN







## FIXED DECK DOUBLE DECK



## MOVING DECK DOUBLE DECK







## RIGID BODYWORK



## SWAP-BODY SYSTEMS







## TEMPERATURE-CONTROLLED



## TIGER TRAILERS DECK POD











# CURTAINSIDER

- EN 12642-XL compliant
- Class-leading range designed specifically for customers' operational needs
- Dry freight, urban and temperature-controlled designs available
- Lightweight design available for increased payload capacity





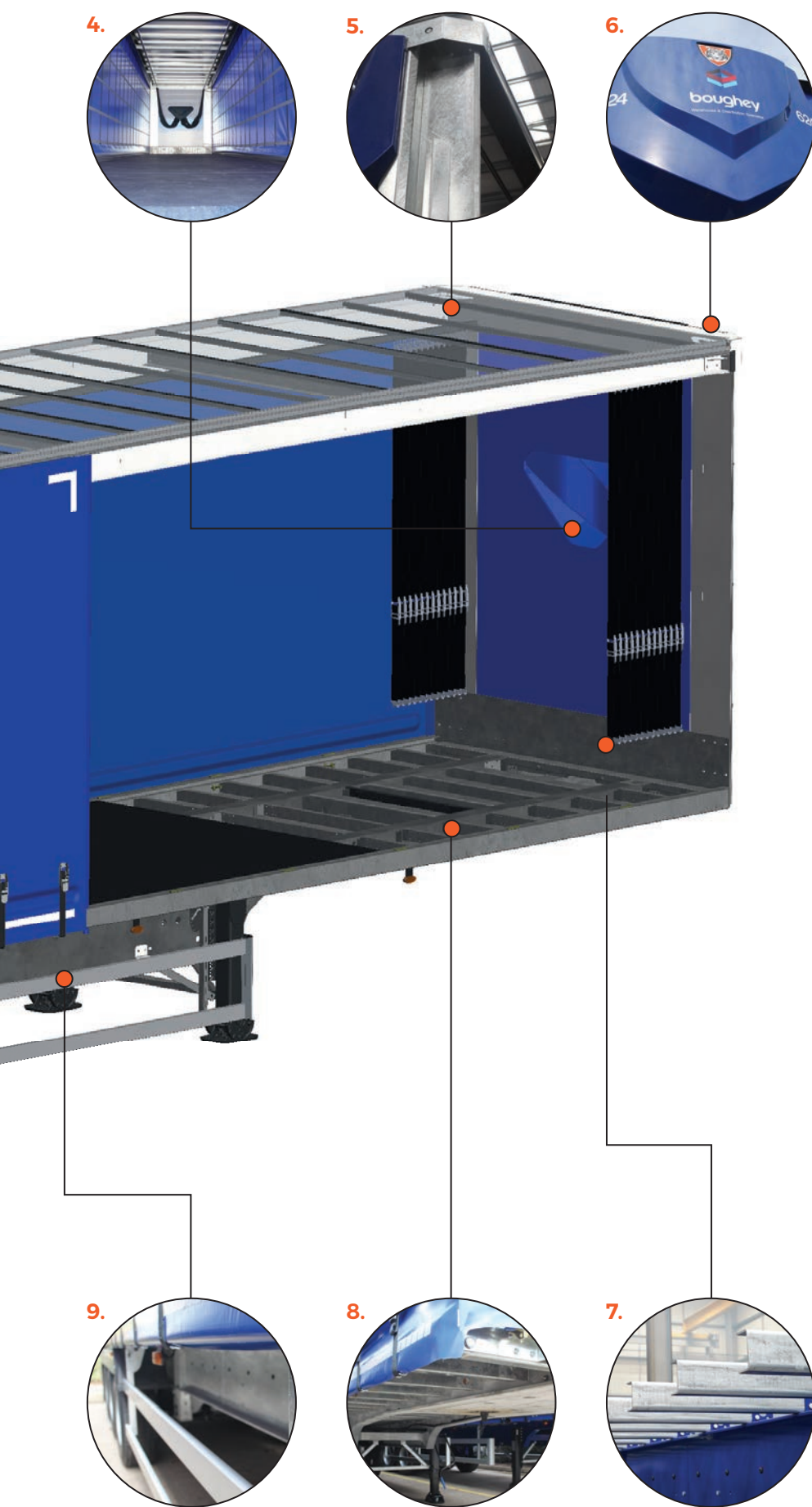
## PRODUCT FOCUS

# Curtainsider

EN 12642-XL compliant







## KEY

1. Flush fitting rear doors
2. Recessed LED top lights
3. Clearspan pillarless roof design
4. Inner strap storage front panel
5. Galvanised end frames
6. Aerodynamic front panel
7. Galvanised floor bearers and V-groove side rave
8. Galvanised chassis, with eight-year warranty
9. Anodised side guards with galvanised side guard legs
10. Flap and valance spray suppression
11. Rear lights, mounted on a separate galvanised steel outrigger
12. Three-rung pull out step
13. Bolt-on, galvanised under-run bar
14. Roller rear buffers

All Tiger's products are designed using 3D SOLIDWORKS™





# CURTAINSIDER

Typical 4.2m overall height trailer shown below

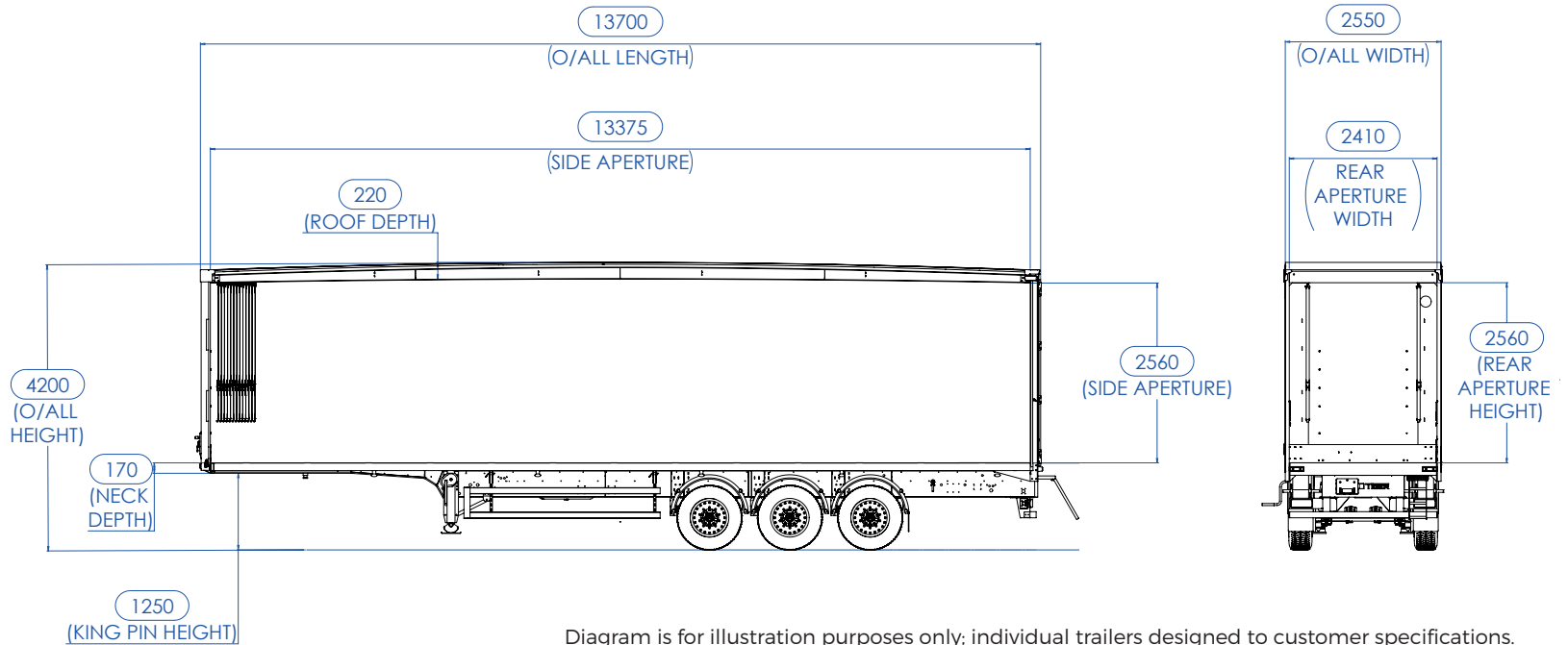
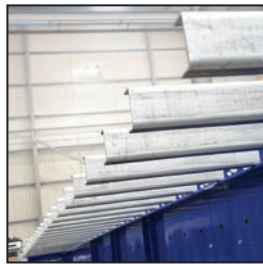


Diagram is for illustration purposes only; individual trailers designed to customer specifications.

## Standard features



Overfloor, high tensile chassis design



Galvanised floor bearers and V-groove side rails



Galvanised end frames



Hot-dip galvanised bolt-on under-run bar



Clearspan roof design



Recessed LED marker lights



Flap and valance spray suppression



Galvanised front nose box with heavy duty lead up



Front and rear tensioners



Stainless steel, bolt-on locking buckles



we think transport



Dream of **PERFORMANCE**,  
**RELIABILITY** and **SUPPORT**...

**REST ASSURED WITH BPW.**



**QUALITY YOU CAN TRUST.**

BPW Limited | Centurion Way | Meridian Business Park | Leicester LE19 1WH  
Tel: 0116 281 6100 | Email: [info@bpw.co.uk](mailto:info@bpw.co.uk)  
[www.bpw.co.uk](http://www.bpw.co.uk)

The brands of the BPW Group:



BPW Limited



@BPW\_UK



BPWUK



ERMAX®



HBN-Teknik AS

HESTAL



idem  
telematics





# CURTAINSIDER GALLERY











## CASE STUDY: BRITISH GYPSUM

# Lightweight and safe Curtainsider trailers showcase innovation

Within just twelve weeks in 2019, Tiger Trailers delivered several hundred lightweight Curtainsiders to eight British Gypsum locations across the UK. At a breakthrough 6,500kg each, these remarkable trailers helped the customer achieve a significant cost per tonne improvement. Incorporating Tiger's innovative 'Captive Rave' load securing system, they are also safer and more efficient for operatives.

Following British Gypsum awarding XPO Logistics with a 10-year partnership contract, Tiger Trailers was engaged alongside Scania as a key fleet partner and set the challenge of designing a Curtainsider trailer strong yet light enough to carry a 29,500kg payload (itself a 2,500kg improvement for the customer) whilst operating at 44,000kg in overall weight including the tractor unit, trailer and load.

Working closely with Tata Steel and utilising advanced CAD, finite element analysis (FEA) plus high-grade steel, Tiger Trailers achieved a weight saving of 850kg, creating one of the lightest tri-axle Curtainsider trailers on the UK market.

The translucent design of Tiger Trailers' clearspan pillarless roof provides increased weight capability in addition to







enhanced light levels and visibility, which both boost safety, and the front tensioners are designed for finger bay FLT operation.

Tiger Trailers' engineers created an innovative load securing system called 'Captive Rave' (patent applied for). Replacing a traditional 'hook' strap approach, this roof-mounted system features ratchets stored individually inside the rear doors, with the straps 'captive' throughout the process, greatly reducing potential injury. With curtain straps reduced by 70% to just 18, British Gypsum has benefitted from commensurate operational efficiency gains. Additionally, flush doors enable the customer to showcase its branding even more purely.

"The team from XPO Logistics, British Gypsum and Tiger Trailers recognised the benefit of a close working partnership throughout this design, build and fleet transition project in 2019. I couldn't be more proud of the new British Gypsum Transport network and its

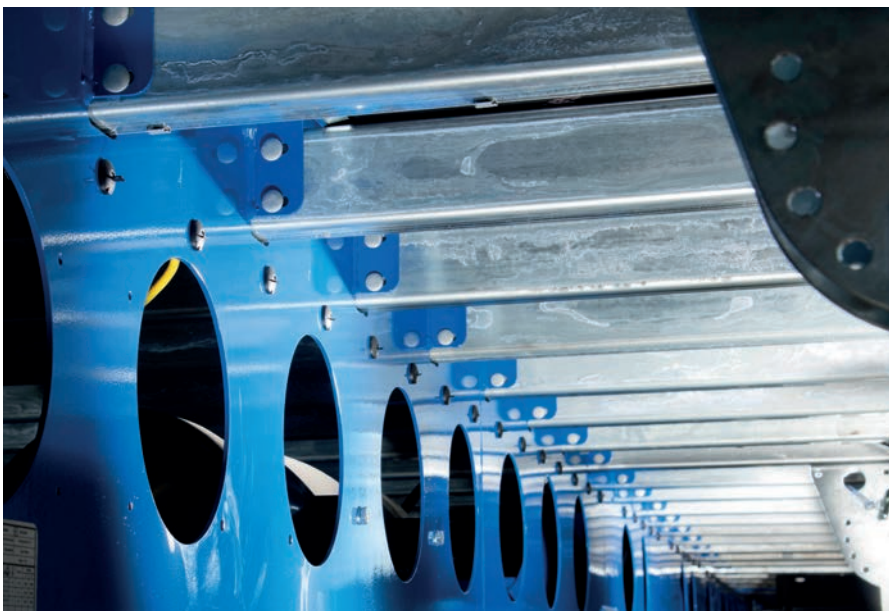
new fleet of lightweight Tiger Trailers and I'm reminded of this every time I see one of them on UK roads!", comments XPO Logistics' Account Director for British Gypsum, Damien Oliphant.

The fleet enlargement programme signalled the biggest change project in British Gypsum's business since 2008, with Tiger Trailers' Curtainsiders comprising a dominant percentage of the company's new assets.

- ✔ **Tiger Trailers manufactured and delivered several hundred Curtainsiders for British Gypsum in just 12 weeks**
- ✔ **Typical 13.6m curtainsider trailers weigh 7,350kg on average - and Tiger achieved 6,500kg**
- ✔ **British Gypsum now operates the safest UK truck and trailer fleet 'on the road'.**





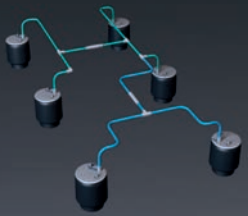


*"We relish being set a challenge and this project for British Gypsum involved a number, from the lightweight requirements to the scale of the order. It was a pleasure to work closely with the customer, XPO and other partners and we look forward to continuing to support British Gypsum over the coming years."*

**Darren Holland**  
Sales Director, Tiger Trailers



# INCREASED FUNCTIONALITY



**EB+** Load Transfer



**EB+** Soft Docking



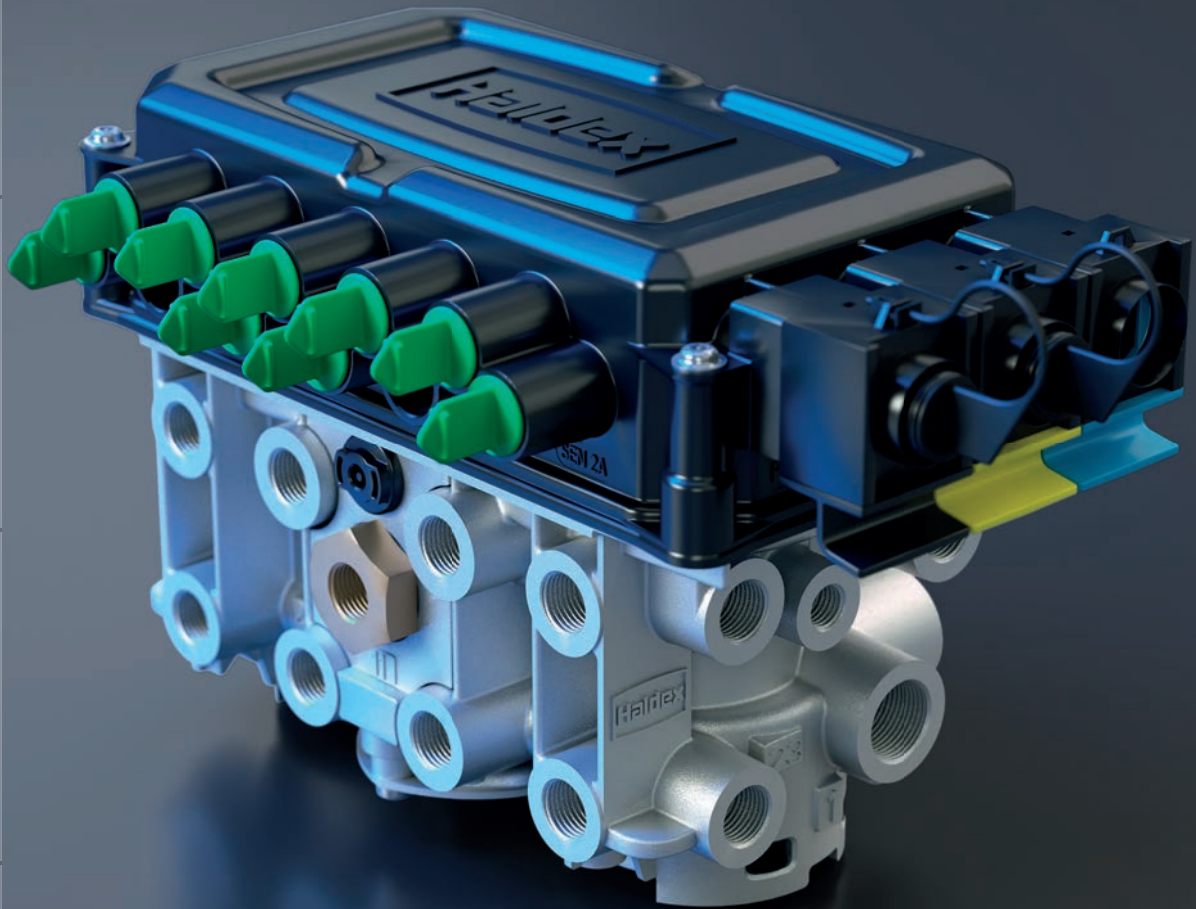
**EB+** Info Centre



**TPMS**

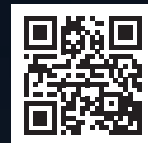


**FLEET+**



## **EB+ GEN3** Electronic Braking System

Extensive software and hardware development:  
the third generation of EB+ comes with greater  
than ever capacity.



Scan to learn more



Innovative Vehicle Solutions

[www.haldex.com](http://www.haldex.com)









## BOX VAN

- EN 12642-XL compliant
- Designed and manufactured for high-intensity use
- Class-leading range designed specifically for customers' operational needs
- Galvanised end frames as standard with option for galvanised chassis
- Dry freight and temperature-controlled designs



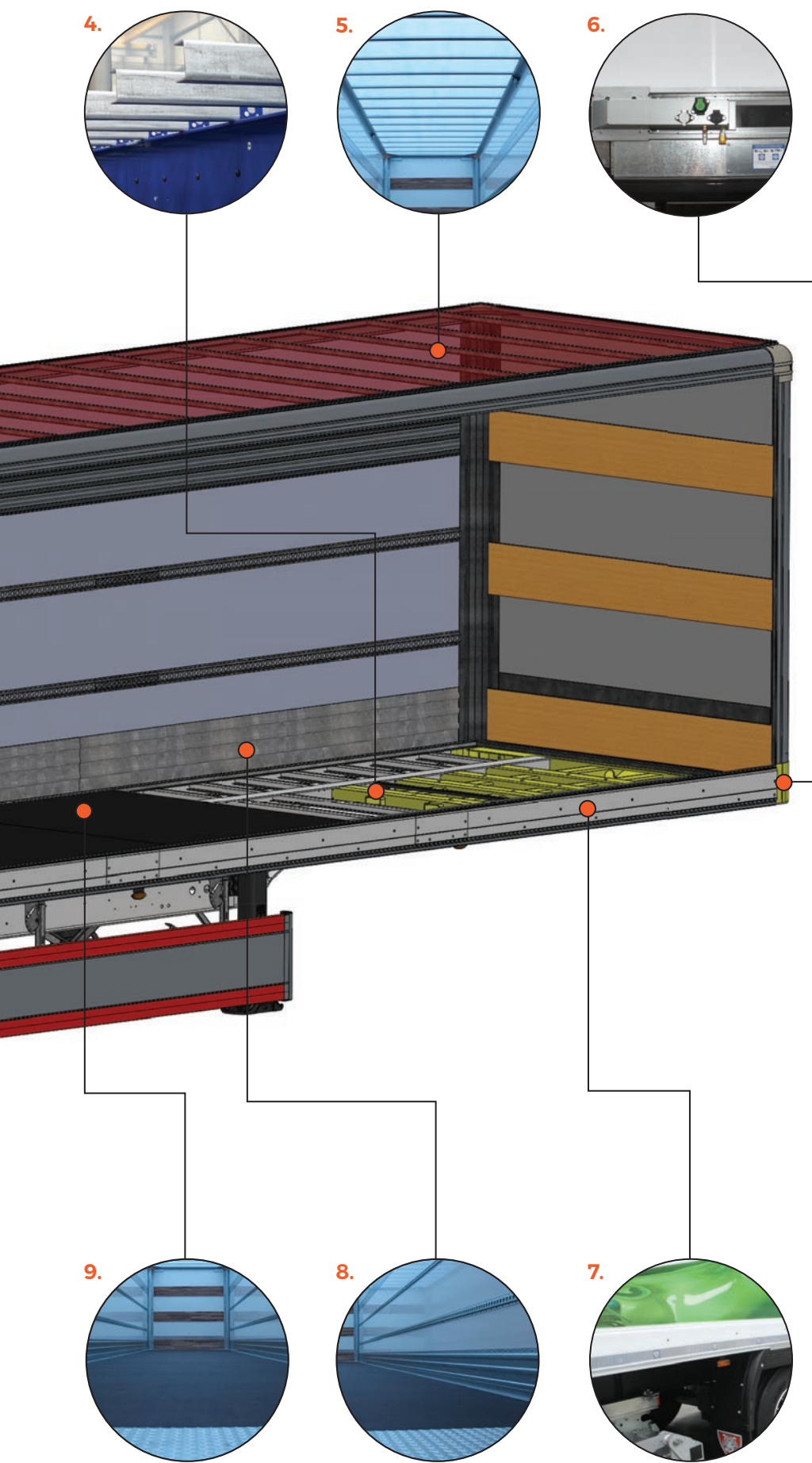


## PRODUCT FOCUS

# Box Van







## KEY

1. Lightweight aluminium shutter door
2. Recessed LED marker lights
3. Radius aluminium outer cappings
4. Galvanised floor bearers
5. GRP roof sheet
6. Ground level access sliding nosebox
7. Concealed side rave with nylon plastic insert
8. 300mm galvanised kickstrip
9. Overfloor chassis design
10. Side guards with aluminium infill
11. Flap and valance spray suppression
12. Galvanised end frames
13. Three-rung pull out step with top landing
14. Under-run incorporated with tail-lift

All Tiger's products are designed using 3D SOLIDWORKS™



# BOX VAN

Typical 4m overall height trailer shown below

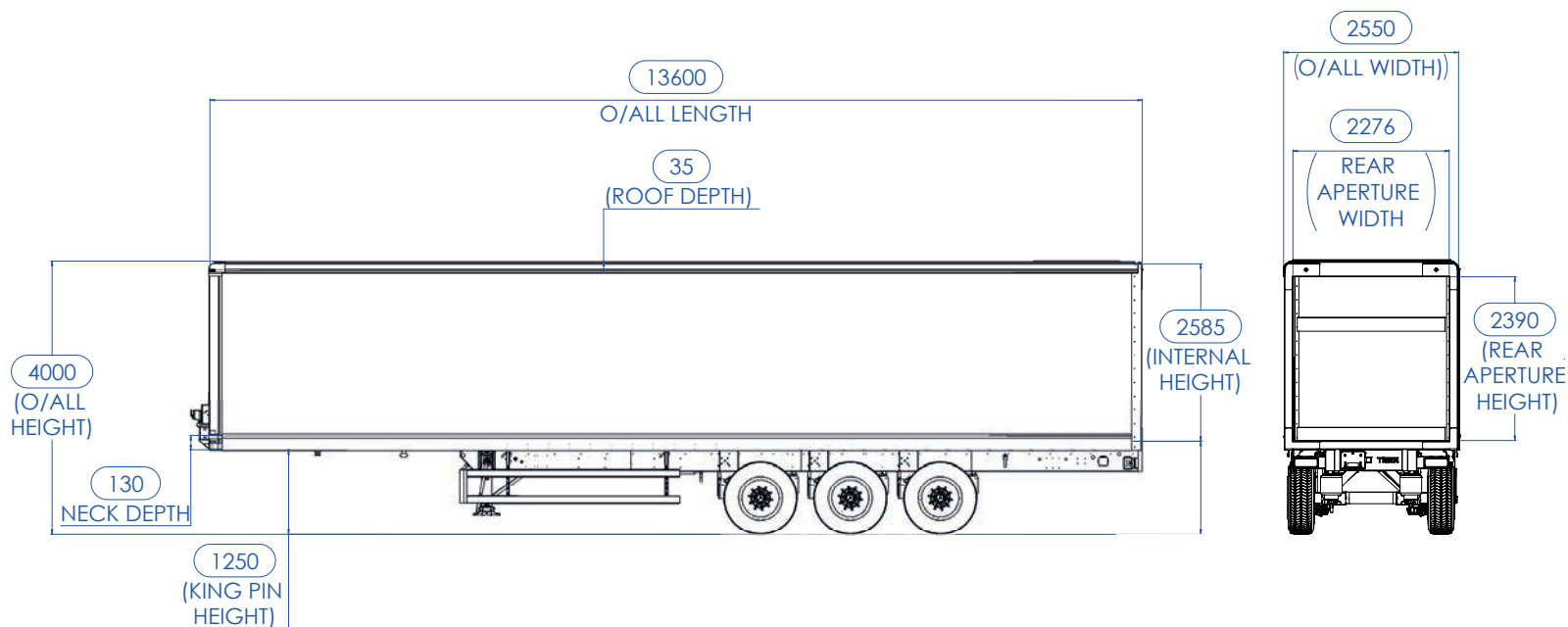


Diagram is for illustration purposes only; individual trailers designed to customer specifications.

## Standard features



Overfloor, high tensile chassis design



Galvanised floor bearers and aluminium alloy side rave with concealed fastenings



EN 12642-XL front, roof and rear frame assemblies



Hot-dipped galvanised under-run bar



Pre-colour impregnated GRP side panels



300mm galvanised kick strip



Galvanised front nose box with heavy duty lead-up



Load securing options



Flap and valance spray suppression

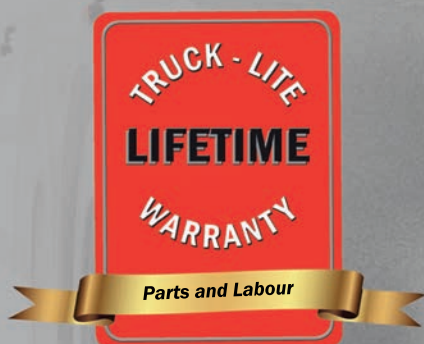


Galvanised end frames



# 'INTELLIGENT, INNOVATIVE, ICONIC'

By Truck-Lite Europe



Global supplier and manufacturer of complete commercial vehicle lighting systems. Innovative solutions and quality products available with a **Lifetime Warranty**.



Proudly supported by...



[www.Truck-Lite.eu.com](http://www.Truck-Lite.eu.com)





# BOX VAN GALLERY











## CASE STUDY: POUNDLAND

# Retailer boxes clever with durable solution from Tiger Trailers

The combined footprint of Poundland and its Dealz brand in the Republic of Ireland comprises 4 distribution centres and over 900 stores serving more than 7 million customers each week. Discount retailers run streamlined operations and for its latest Box Van fleet additions, Poundland turned to Tiger Trailers, a manufacturer it knew would deliver.

Poundland's fleet plays a key role in keeping shelves stocked and families provided for, and the retailer chose Tiger Trailers based partly on the manufacturer's reputation for long-lasting solutions that prove efficient to operate and maintain -

attributes reflected in the new Box Van trailers delivered for the customer.

Poundland's tri-axle Box Van trailers feature galvanised chassis to maximise longevity while reducing whole life refurbishment costs.







"Tiger Trailers listened to our requirements and reflected them in the Box Vans delivered, which were manufactured on time and to the high standard our operation dictates. They are fast proving a valuable fleet asset and we won't hesitate to turn to Tiger for future needs", says Poundland's Logistics Director, Tim Goalen.

Additional components incorporated with minimising damage and subsequent costs in mind include nylon side rave inserts and reinforced rear frames on the outside, complemented by enhanced internal load restraints and protection on the inside of the trailers.

Side guard inserts were specified in order to boost awareness and safety for those in the vicinity of the vehicle, from pedestrians to other road users including cyclists.

A D Hollandia tail-lift with an integral underrun, Ecopoint rear lights, a tailored shunt facility, a rear roll-cage retention strap, Knorr Bremse EBS braking system and a side valance with rear standard spray suppression set at ferry operating height completed Poundland's striking Box Van assets from Tiger Trailers.

"We're delighted to have delivered these eye-catching Box Vans for such a well-known retailer. The customer's very specific brief that placed a core emphasis on durability enabled our design and engineering team to demonstrate their expertise", remarks Tiger Trailers' Sales Director, Darren Holland.



**Poundland's fleet serves over 900 stores and 7 million customers in the UK & ROI, joined by 4 distribution centres**



**The retailer's brief to Tiger Trailers was focussed on durability**







W. J. Leech & Sons Ltd.  
Established 1920



0151 933 9334



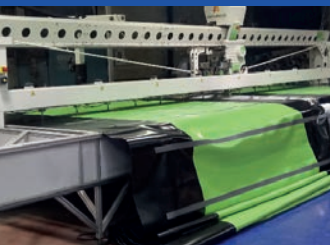
0151 933 5005



[www.wjleech.com](http://www.wjleech.com)

## Services to

- Industrial
- Agricultural
- Aviation
- Advertising / Banners
- Railways
- Transport



Tel: +44 (0) 151 933 9334  
[www.wjleech.com](http://www.wjleech.com)



275 Derby Road,  
Bootle  
Liverpool.  
L20 8PL.

The latest computer  
software, printing and  
cutting equipment, for  
the design and production  
of top quality graphics.

## THE NEXT GENERATION IN TRAILER TELEMATICS

TrailerMaster uses the latest technology to go beyond basic 'track and trace' functionality, to enable a truly connected experience, including:

- Electronic Brake Performance Monitoring (EBPMS)
- Tyre Pressure Monitoring (TPMS)
- DTC Monitoring
- Bogie Load Monitoring
- Trailer Tracking
- Trailer Light Circuit Monitoring

Get in touch today to find out more

**T:** 01303 842 100

**E:** [info@axscend.com](mailto:info@axscend.com)

**W:** [www.trailermaster.com](http://www.trailermaster.com)



TRAILERMASTER.COM







A I R T O O L S

## Blind Fastener Systems & Air Tools

- Application Reviews, Full Technical Support & Turn-Key Solutions
- In House Repair & Servicing of all Air & Hydro-Pneumatic Tools

Contact our sales team  
today for...

- ✧ Rivets
- ✧ Rivet Nuts
- ✧ Lockbolts & Griptainer Type Fixings
- ✧ Rivet Insert Tools
- ✧ Thread Insert Tools
- ✧ Structural Fixing Tools
- ✧ Air Line & Fittings
- ✧ Air Tools & Compressors
- ✧ Lubricants

Enjoy the key benefits of dealing  
with Mettex

### Value

Leading brands at competitive prices  
from a single dedicated source

### Quality

Accredited to BS EN ISO 9001 : 2015

### Service

Experienced & well trained staff, clear  
paperwork, accurate on-time deliveries  
to work or site

### Support

After sales & technical back-up,  
application reviews, kitting, stock  
systems, IT & e-commerce initiatives.



Authorised Quality Assured Distributor and Service Agent  
for FAR Tools & Fasteners. In depth stocks backed by the  
very highest levels of after sales service & support.



t : 01782 712345

f : 01782 712999

e : [airtools@mettex.co.uk](mailto:airtools@mettex.co.uk)

[www.mettexairtools.co.uk](http://www.mettexairtools.co.uk)

✧ Quality ✧ Service ✧ Support











## FIXED DECK DOUBLE DECK

- EN 12642-XL compliant
- Bespoke designs to exact customer requirements
- Straight frame, step frame, wedge, urban and LST chassis options
- Box Van, Curtainsider and temperature-controlled designs

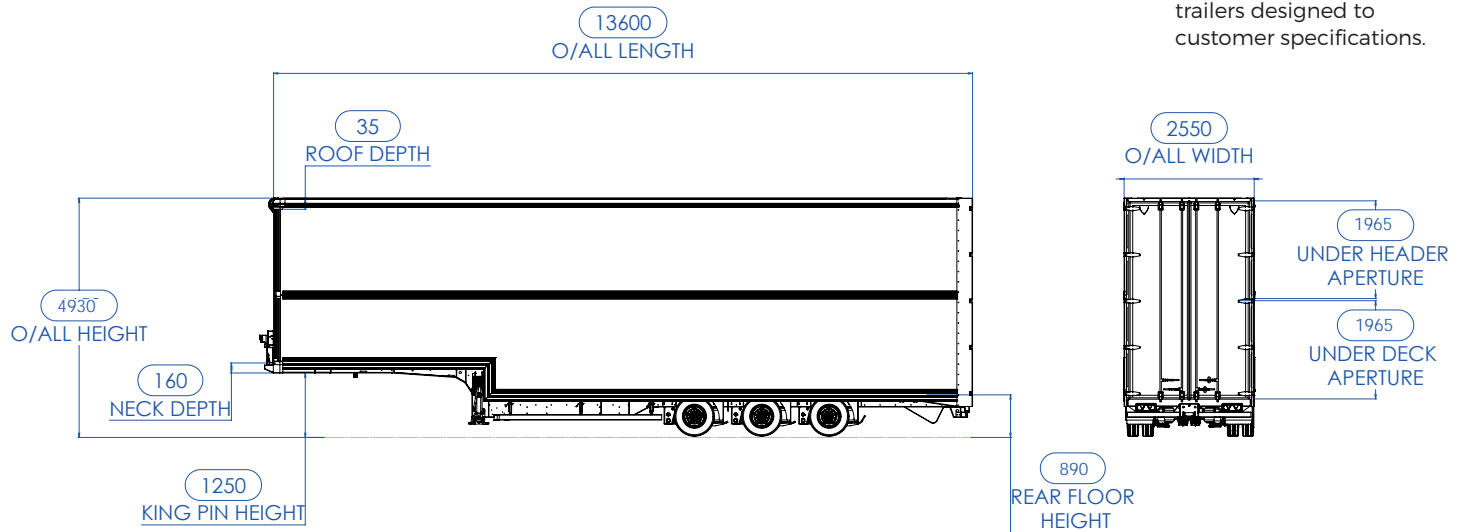




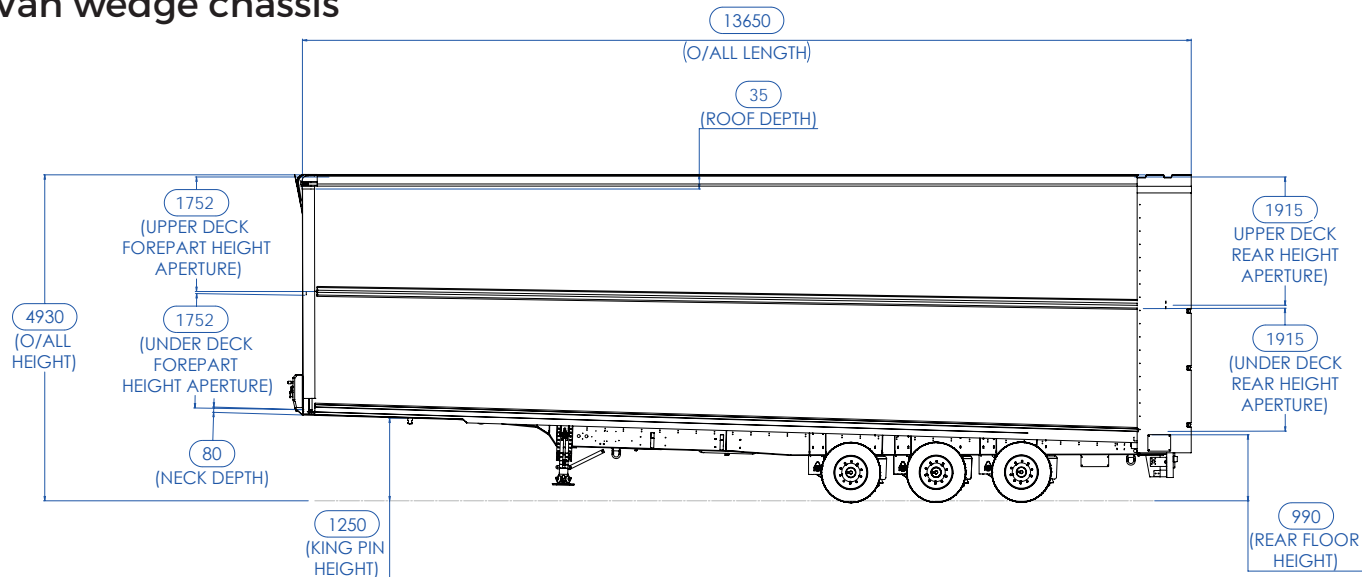
# FIXED DECK DOUBLE DECK

## Box Van step frame chassis

Diagrams are for illustration purposes only; individual trailers designed to customer specifications.



## Box Van wedge chassis



### Internal options include:

- Phenolic plywood, Expamesh, aluminium plank or steel treadplate flooring
- Full range of load securing

### External options include:

- Aluminium extrusions with concealed fastenings
- GRP and composite panel choices (Box Van)
- Wide lathe shutter doors, double doors and tail-lift options
- Manually adjustable deck also available.



# THE ART OF LIGHTS



IT GLOWS TEST IT ITS SAFE TURN IT ITS SAFE SWITCH IT ITS SAFE



## INNOVATIVE REAR LAMP ECOLED II

REPLACEABLE LENS | PROGRESSIVE INDICATOR | SINGLE PART NUMBER FOR SPARES

The **ASPÖCK ECOLED II rear lamp** for trailers and trucks is light housed in a glowing body. A clear design in its lighting solutions and new technological visions has been shaping the history of the company on an international scale for over 40 years.

[www.aspoeck.com](http://www.aspoeck.com)



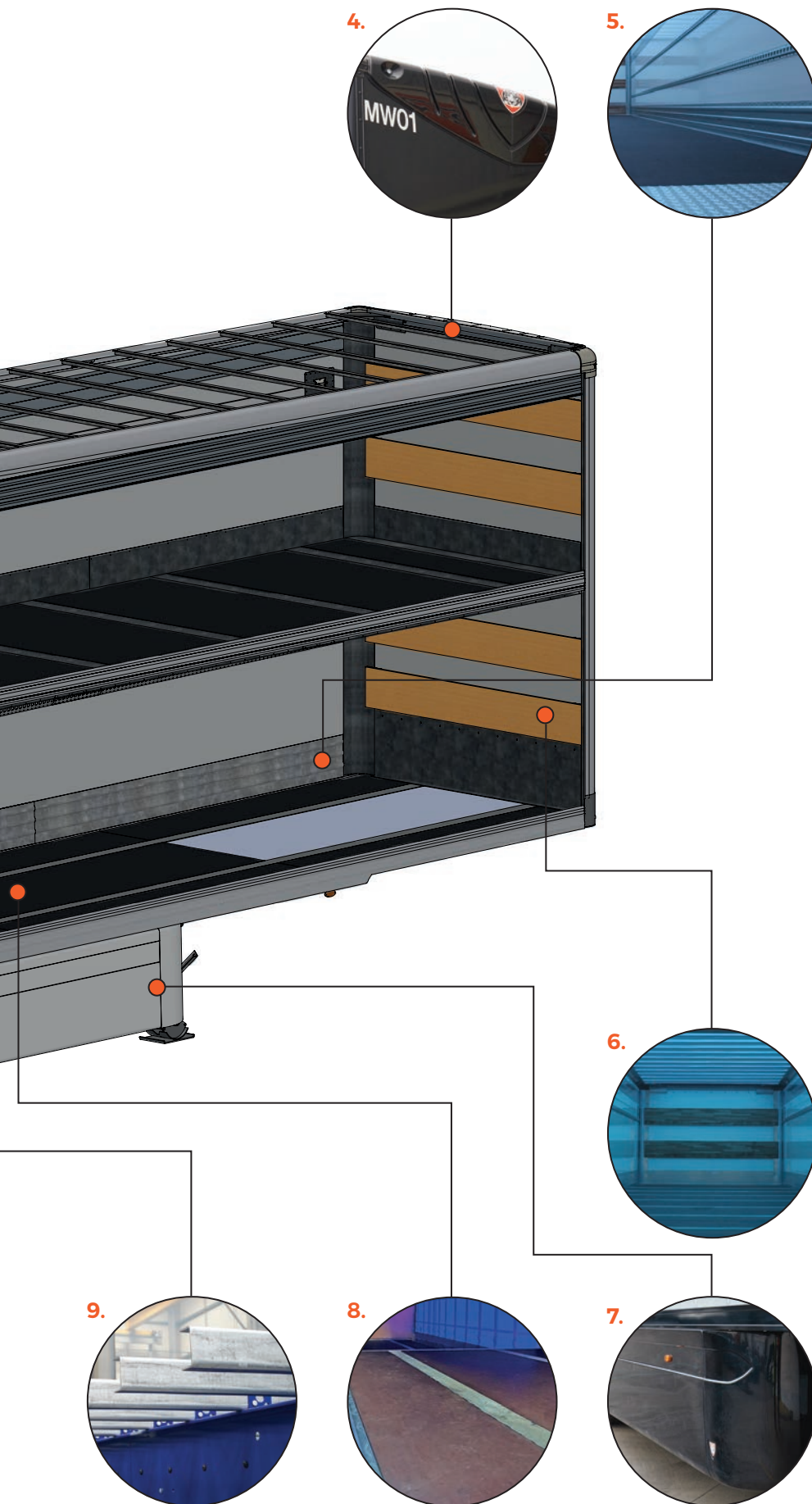


## PRODUCT FOCUS

# Fixed Deck Double Deck







## KEY

### Box Van wedge chassis design

1. Recessed LED lights
2. 19mm ply-metal faced rear doors with double lock bars
3. Captive load restraint with shoring poles
4. Front aerodynamic panel
5. 300mm galvanised kick strips
6. Hardwood buffers
7. Full aerodynamic side guard kit
8. 30mm non-slip phenolic-coated plywood flush fitting floor
9. Galvanised steel bearers
10. Wheel nut indicators
11. Thermo plastic mudwings with spray suppression
12. Aluminium alloy side rave with concealed fastenings
13. Galvanised end frame
14. Hot-dip galvanised under-run bar
15. Heavy duty steel rear buffers incorporated into rear frame pillar
16. Second deck rated at 10,000kg

All Tiger's products are designed using 3D SOLIDWORKS™





# FIXED DECK DOUBLE DECK GALLERY











## CASE STUDY: B&M

# Continuous evolution results in the complete package

Having manufactured trailers for this leading variety retailer since 2015, supplying over 400 trailers, every build has seen various design, engineering and operational strides being made - and today Tiger Trailers provides B&M with a complete solution.

The manufacturer's earlier builds for B&M were in the guise of stepframe Curtainsider trailers that enabled 44 pallets to be transported. B&M's order for 2020 comprised twenty-one straightframe Fixed Deck Double Deck wedge vans capable of carrying

52 pallets by utilising the full length of the lower deck, highlighting the strong capacity gains achieved with this latest tranche of vehicles that are the culmination of continuous reviews of the customer's operations, with an emphasis on loading requirements.

- ✔ Tiger has manufactured trailers for B&M since 2015
- ✔ The variety retailer previously operated 44-pallet Curtainsiders and now relies on 52-pallet Fixed Deck Double Decks
- ✔ Tiger Trailers also provides B&M with Deck Pod loading bay solutions for both single and double decks.







Customer-specific aperture dimensions identified by Tiger Trailers' designers allow the bottom deck to be loaded without moving the tail lift, which forms the upper rear closure.

The Double Deck Trailers' wedge design enables an operator loading height at the rear of 1917mm, which tapers towards the front of the vehicle. The rear frame assembly is reinforced at the bottom to protect against damage from loading bays, while Tiger Trailers' innovative 'Captive Rave' load securing and restraint system is utilised inside for enhanced efficiency along with added operator safety.

Incorporating an integrated twin-tier tail lift from Dhollandia enables efficient deliveries to be made directly from B&M's widespread distribution centres to its nationwide stores.

*"Tiger have worked closely with the B&M Logistics & Warehousing teams since 2014. During this time we are extremely pleased that we have developed both the loading and transport solutions to the degree that is evident today. To be able to offer this unique level of service to their operation is very important to us, which we pride ourselves on."*

Darren Holland  
Sales Director, Tiger Trailers







With the mantra 'Right stock, right time', B&M describes its distribution centres as 'the cogs that keep the wheels turning'. Named 'The Fort', B&M's Bedford warehouse is the largest in its nationwide portfolio - and Tiger Trailers is proud to have developed innovative loading bay solutions to ensure that efficiency is as strong as possible.

Over the last five years, Tiger Trailers has utilised its extensive industry knowledge in the design and manufacture of Double Deck Trailers to create a complete loading solution designed to meet B&M's exact requirements.

The Tiger Trailers Deck Pod™ loading solution in operation at B&M's distribution centre in Bedford equips the variety retailer with faster loading and unloading times compared to alternatives and is currently the UK's only system for both single and Double Deck Trailers.

Featuring a wider internal platform lift, double the quantity of pallets can be loaded on the deck in one lift, up to a total of 14 at one time including room for the operator. Level loading of each deck is achieved using a hydraulic, telescopic bridge plate, and B&M's personnel can work more safely because access to the Deck Pod is at warehouse level, requiring no decline ramp to begin loading.

Only one standard warehouse bay is required because Tiger's design maximises use of space and incorporates a narrower external width.

Easier and safer to use than alternative loading solutions, with enhanced levels of light, an array of LED indicator lamps plus safety measures including emergency gates and end guards, Tiger Trailers Deck Pod provides reassuring protection for B&M's operatives.

Maintenance time and costs are also optimised and kept to a minimum with Tiger Trailers Deck Pod loading solutions, the hydraulic direct-drive four-ram lift system carrying a simpler design than more traditional rope and pulley variants, meaning less wearing of parts and a reduction of lifetime maintenance costs.

Tiger Trailers has developed a close partnership with B&M over several years, the latest order of Fixed Deck Double Deck wedge vans combined with the retailer's Bedford site's loading bay solutions proving an impressive package through continuous engineering innovation and the manufacturer's consultative, customer-led approach to trailer design.















# MOVING DECK DOUBLE DECK

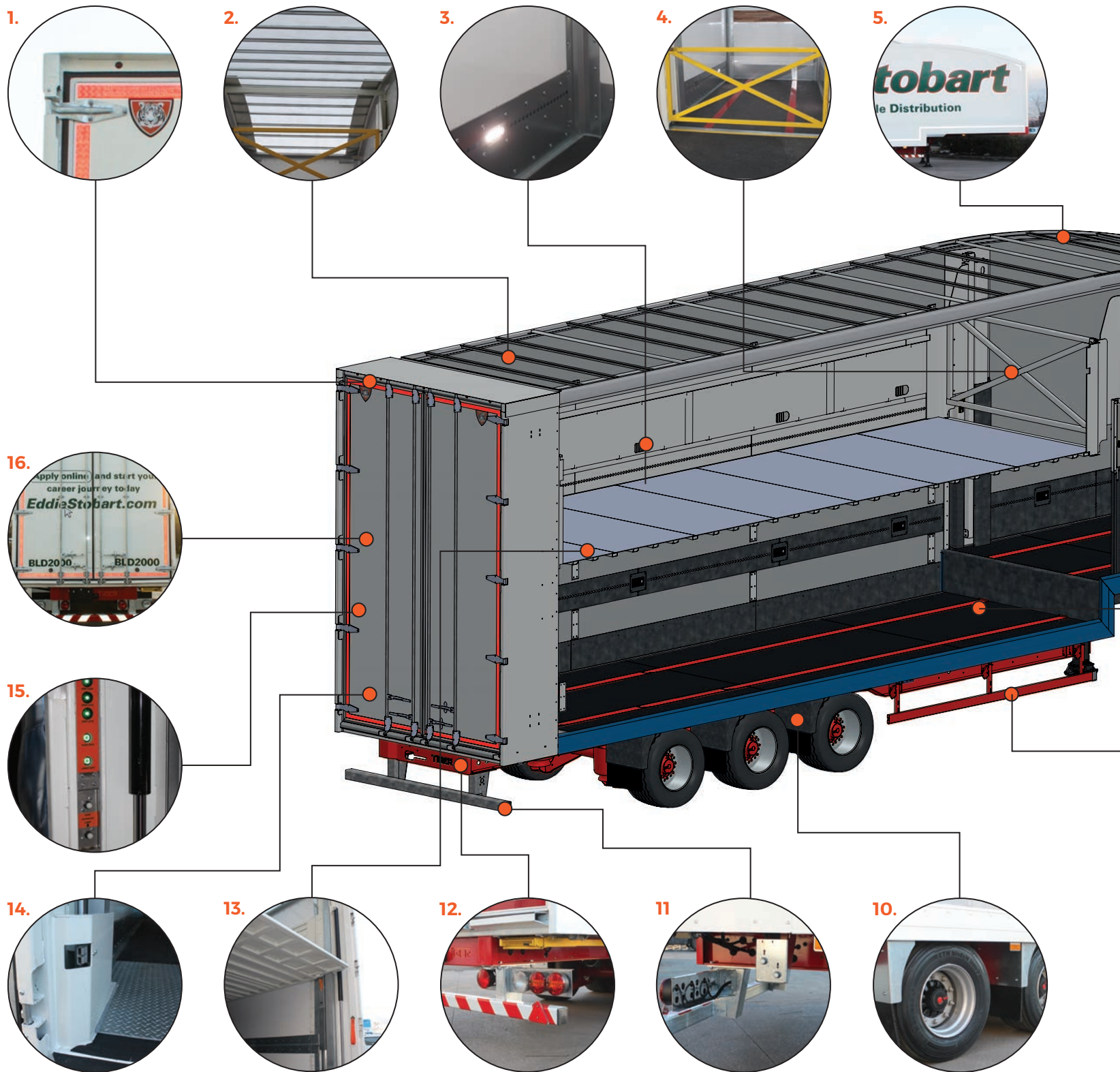
- EN 12642-XL compliant
- Bespoke designs to exact customer requirements
- Straight frame, step frame, wedge, urban and LST chassis options
- Box Van, Curtainsider and temperature-controlled designs
- Full range of moving and manually adjustable deck options





## PRODUCT FOCUS

# Moving deck double deck

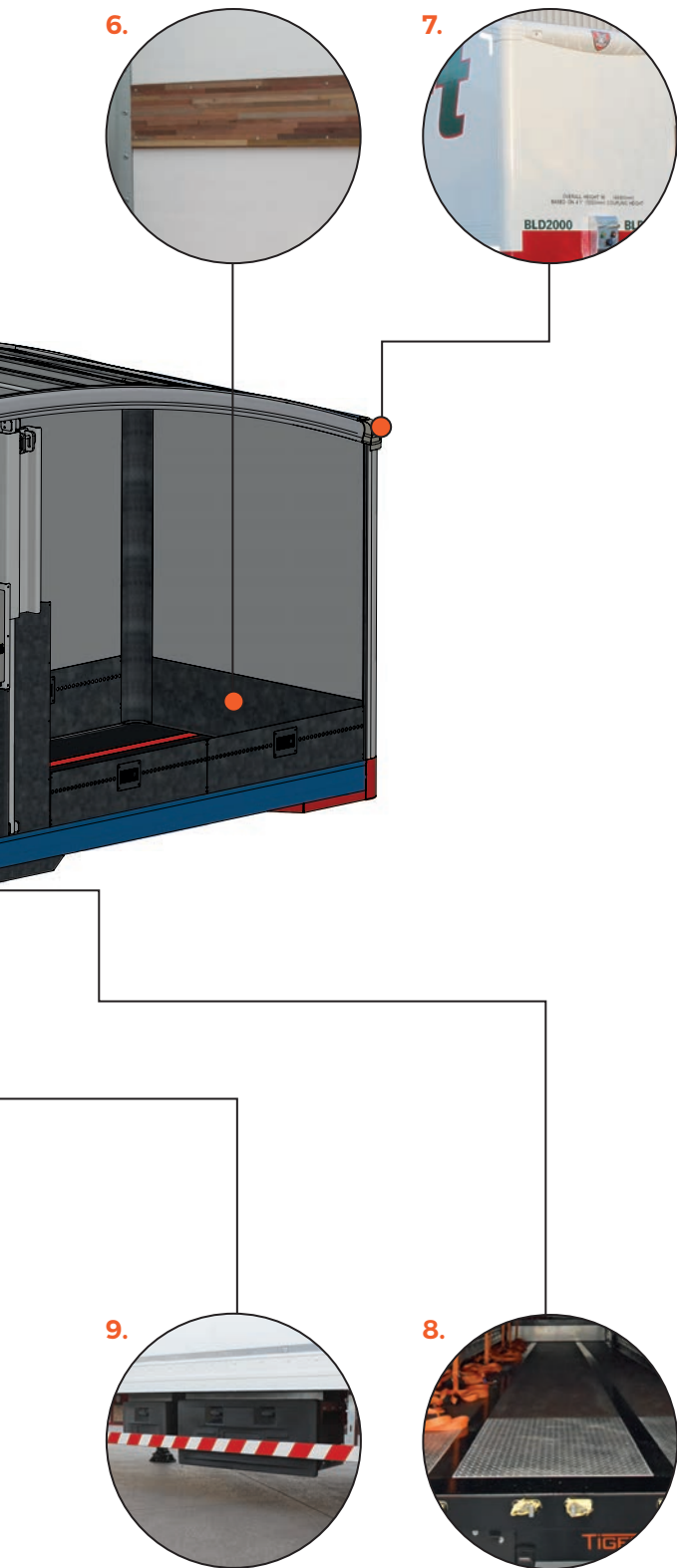






## KEY

### Box Van step frame high tensile fabricated I-beam chassis design



1. Recessed rear top marker lights
2. GRP translucent roof sheet
3. Interior lights recessed into panel joining strip
4. Deck safety gates
5. Sloping roof from rear to front for aerodynamic fuel saving
6. Hardwood buffer at front bulkhead
7. GRP aerodynamic front full-width capping and galvanised nose box
8. 30mm flush floor with 1200mm deep galvanised rear crash plate and 300mm galvanised kick strips
9. Electro-hydraulic power pack positioned behind side guards for ease of access
10. Thermo-plastic mud-wings with spray suppression
11. Hot-dip galvanised bolt-on under-run bar
12. Rear pull-out ladder with operator access strap
13.  $\frac{3}{4}$ -length moving deck powered by four hydraulic rams (integrated in rear frame)
14. Rear crash plate and rear frame with integrated rams in rear channel
15. Deck controls with audio visual aids
16. 19mm ply-metal faced rear doors with galvanised furnishings

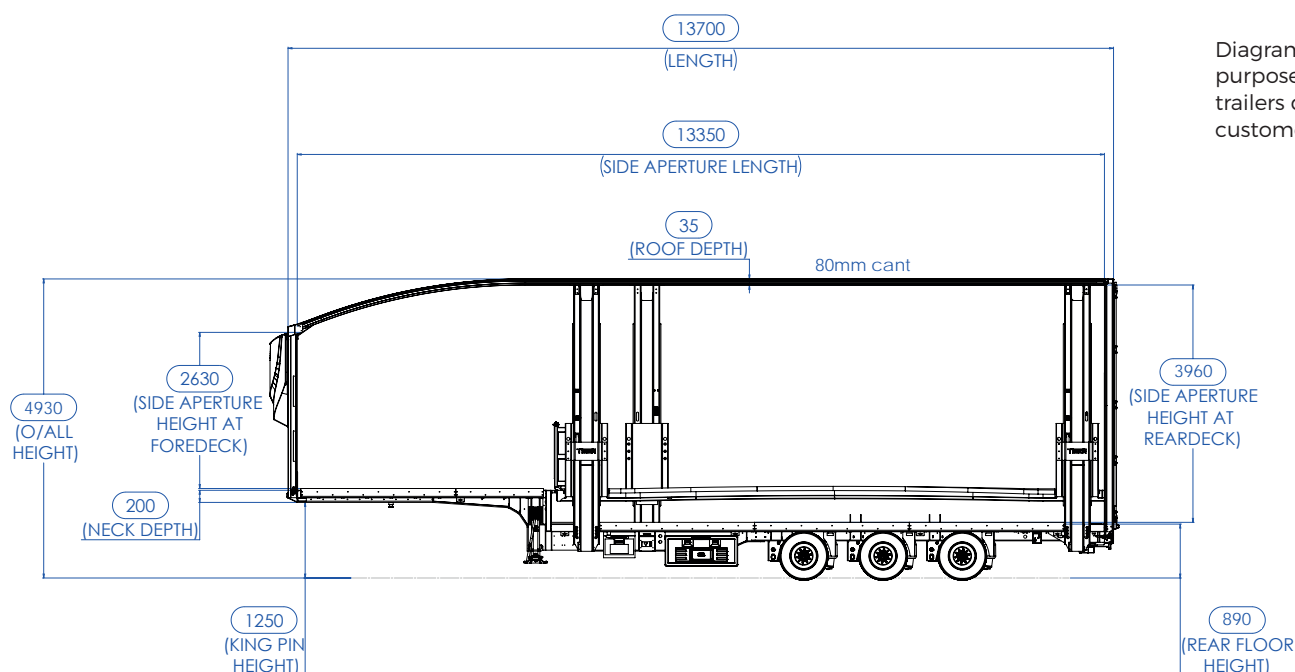
All Tiger's products are designed using 3D SOLIDWORKS™





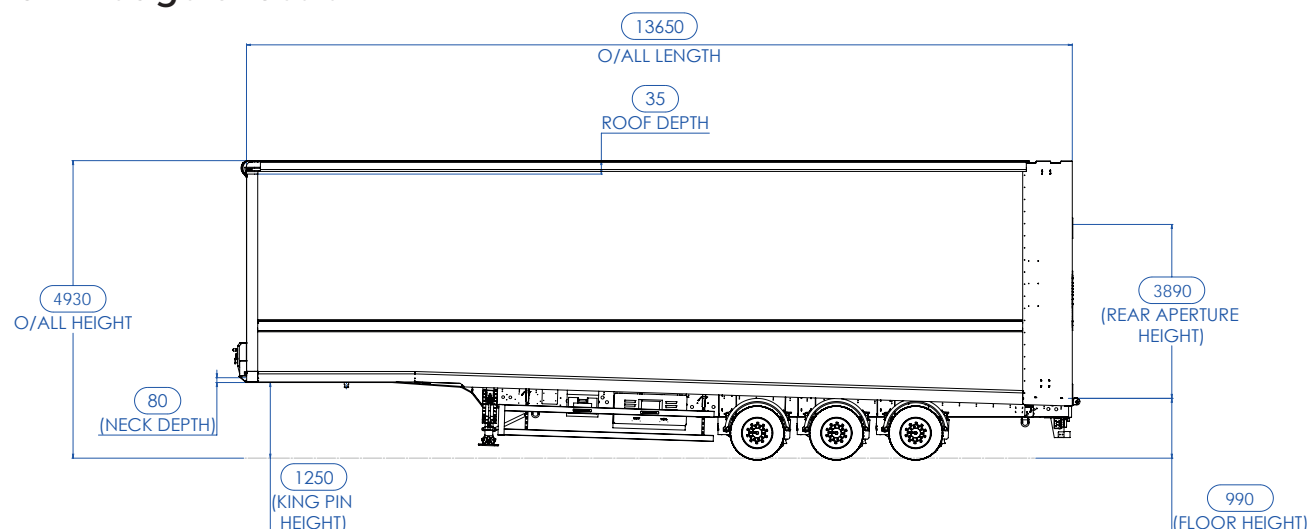
# MOVING DECK DOUBLE DECK

## Curtainsider step frame chassis



Diagrams are for illustration purposes only; individual trailers designed to customer specifications.

## Box Van wedge chassis



### Internal options include:

- Simple to operate two-button hydraulic single and four-ram powered moving deck/decks
- Phenolic plywood, aluminium plank or steel treadplate flooring
- Full range of load securing

### Deck safety features:

- Four automatic deck locks with lock engagement safety lights
- Fully-enclosed power pack/batteries (where specified) for ease of maintenance

### External options include:

- Aluminium extrusions with concealed fastenings
- GRP and composite panel choices (Box Van)
- Wide lathe shutter doors, double doors and tail-lift options



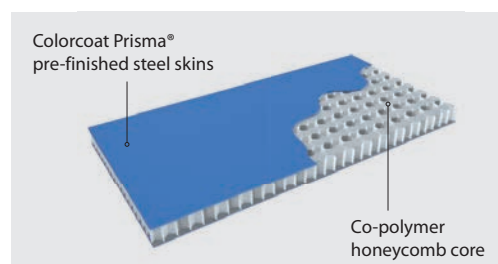
# BRINGING SUSTAINABILITY TO SIDEWALLS

Tata Steel is proud to supply Tiger Trailers with Coretinium® – its new light weight steel skinned honeycomb composite sheet for trailer sidewalls.

Weighing just 8.3 to 10.6kg/m<sup>2</sup> Coretinium can be used to reduce vehicle weights by up to 500kg, saving fuel and reducing CO<sub>2</sub>

Made in the UK at its Shotton Works, Coretinium can be recycled via domestic steelmaking facilities making it the sustainable choice both while your trailer is on the road and at its end of life.

For more information:  
[www.tatasteeleurope/coretinium](http://www.tatasteeleurope/coretinium)







# MOVING DECK DOUBLE DECK GALLERY











## CASE STUDY: MORRISONS

# Versatility and efficiency at the heart of Tiger Trailers' fresh supermarket solution

Operating around 500 stores serving a million customers each week, efficient logistics is vitally important to one of the UK's largest supermarkets, heightened further by the Coronavirus pandemic. Tiger Trailers' experience, insight and innovation in customer-led trailer design delivered an effective solution that coincided with Morrisons' eye-catching and emotive new liveries.

With a 7,300-strong logistics team based at seven regional and one national distribution centre, a vehicle fleet travelling 115 million kilometres a year, 3.5 million cases picked per day from its warehouses, 54,000 collections made from its manufacturing sites a year, and with 96% of the supermarket's deliveries arriving on time, it's essential that Morrisons' trailers are designed for their challenging role.







Morrisons has historically utilised temperature-controlled trailers to undertake the majority of deliveries to its widespread stores throughout the UK, but the supermarket's team, echoed by Tiger's design engineers, identified that switching to ambient Moving Deck Double Deck Trailers would bring almost a 70% efficiency boost to its operations.

Capable of transporting 44 pallets opposed to 26 previously, and also able to carry cages, Tiger Trailers' ambient Moving Deck Double Deck solution for Morrisons is a prime example of innovative design and engineering resulting in 'more products, fewer miles' and translates into 50% more scope for real-world store deliveries.

Critical within the customer's brief was the delivery of a trailer that would be closer to a tall curtainsider in height rather than a conventional double deck, in order to be able to operate within the more restricted environments of Morrisons' urban and rural stores.

- ✔ **Morrisons has 500 stores, 7 regional distribution centres, and its vehicles travel 115 million kilometres each year**
- ✔ **The UK's fourth largest supermarket has traditionally relied on refrigerated trailers for store deliveries**
- ✔ **Tiger Trailers' solution offers efficiency gains of around 70%**







Tiger's ambient Moving Deck Double Deck Curtainsider trailers for Morrisons feature an internal gate rated to 10 tonnes, a cargo load restraint compatible with both cages and pallets, the manufacturer's proven in-house 4-ram deck-lifting system, an aerodynamic roof design, plus EN 12642-XL rated components.

"Our team always embrace a challenge and it's been a privilege to work alongside Morrisons' people in

designing and manufacturing an innovative trailer that fulfils their very specific brief and ultimately helps keep supermarket shelves stocked and people fed. We're proud of the effective and striking trailers we've introduced to Morrisons' fleet and look forward to supporting them over the coming years", says Darren Holland, Tiger Trailers' Sales Director.







*"We're very pleased with our new ambient Double Deck Trailers from Tiger, which are the result of our teams working closely together to achieve a new solution for our fleet. The trailers' extra capacity and versatility signify an innovative step forwards and we're delighted that they carry our new branding elements and messaging, 2020 having galvanised the customer relationship in an unprecedented way. Thanks again to Tiger Trailers' team."*

**Keith Boulton**  
Head of Transport, Morrisons











# Only the best go further.

**The Conti Hybrid** trailer tyre redefines regional. Outstanding mileage performance coupled with excellent fuel efficiency delivers a versatile tyre solution for fleet operators. Designed to deliver on motorways and regional routes, mile after mile after mile.

[www.continental-tyres.co.uk/truck](http://www.continental-tyres.co.uk/truck)



The high mileage  
performer









# RIGID BODYWORK

- EN 12642-XL compliant
- Class-leading range designed specifically for customers' operational needs
- Box Vans, Curtainsiders, prime mover and drawbar + Specialist designs
- From 7.5t to 26t Rigid Bodywork
- Extensive personalisation available
- Incorporating both dry freight and temperature-controlled variants



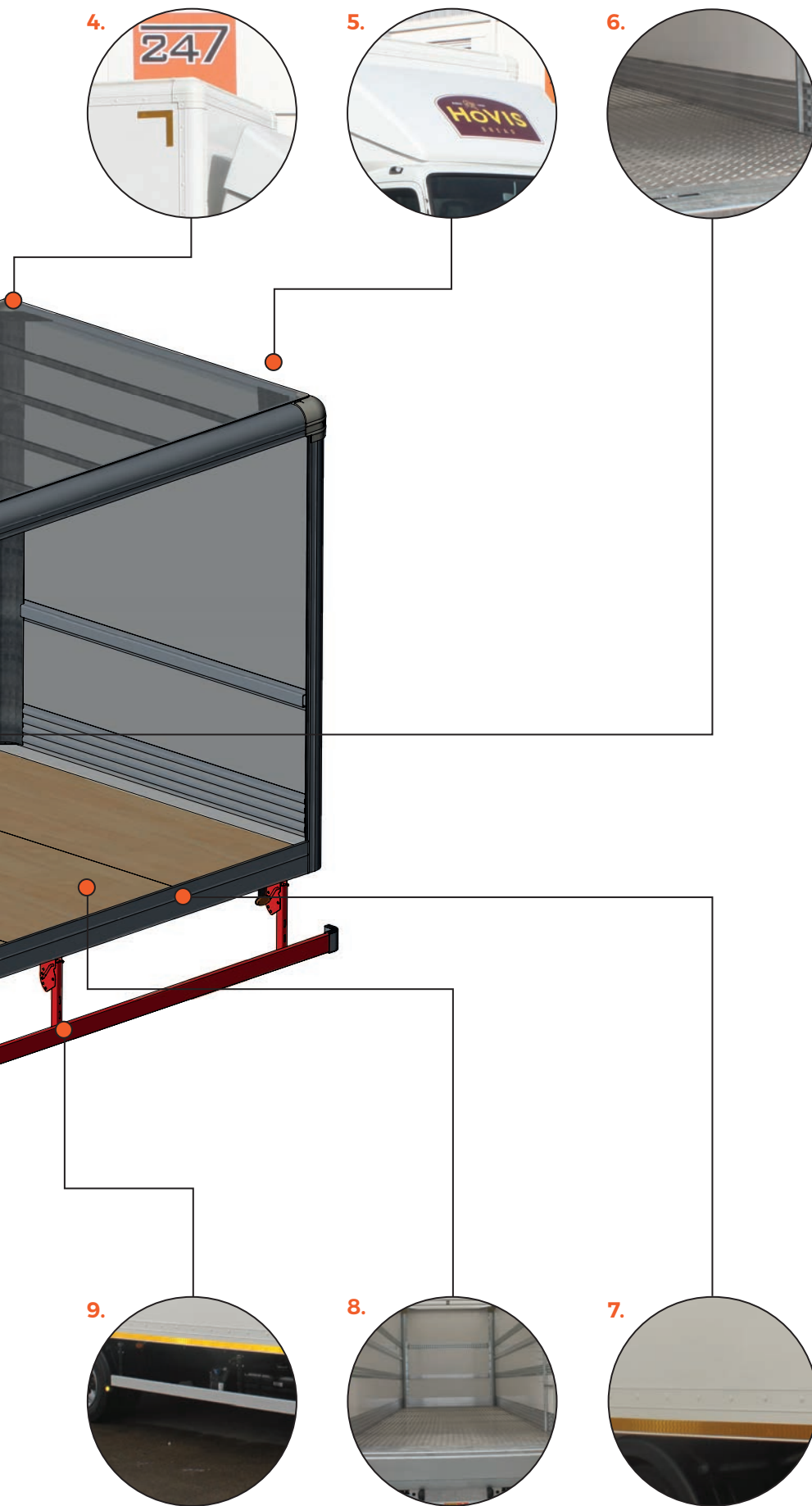


## PRODUCT FOCUS

# Rigid Bodywork







## KEY

This 7.5t example achieves a payload of 3,050kg

1. C4 aluminium alloy lightweight shutter door
2. Hot-dip galvanised rear frame assembly with rebated floor sill and integral drain channel
3. Recessed top marker lights
4. Radius aluminium outer cappings and high impact plastic corner caps
5. Tiger front aerofoil
6. Aluminium corrugated kick strip
7. Aluminium alloy side rave with concealed fastenings
8. 19mm birch wood floor with 3mm aluminium alloy tread plate overlay
9. Aluminium side guards with galvanised steel drop arms
10. Thermoplastic mud-wings with spray suppression
11. Wheel nut indicators
12. Universal Loadlok
13. Lower beam tail-lift incorporated into under-run, with reverse sensors

All Tiger's products are designed using 3D SOLIDWORKS™





# RIGID BODYWORK

Example below based on 7.5t chassis cab

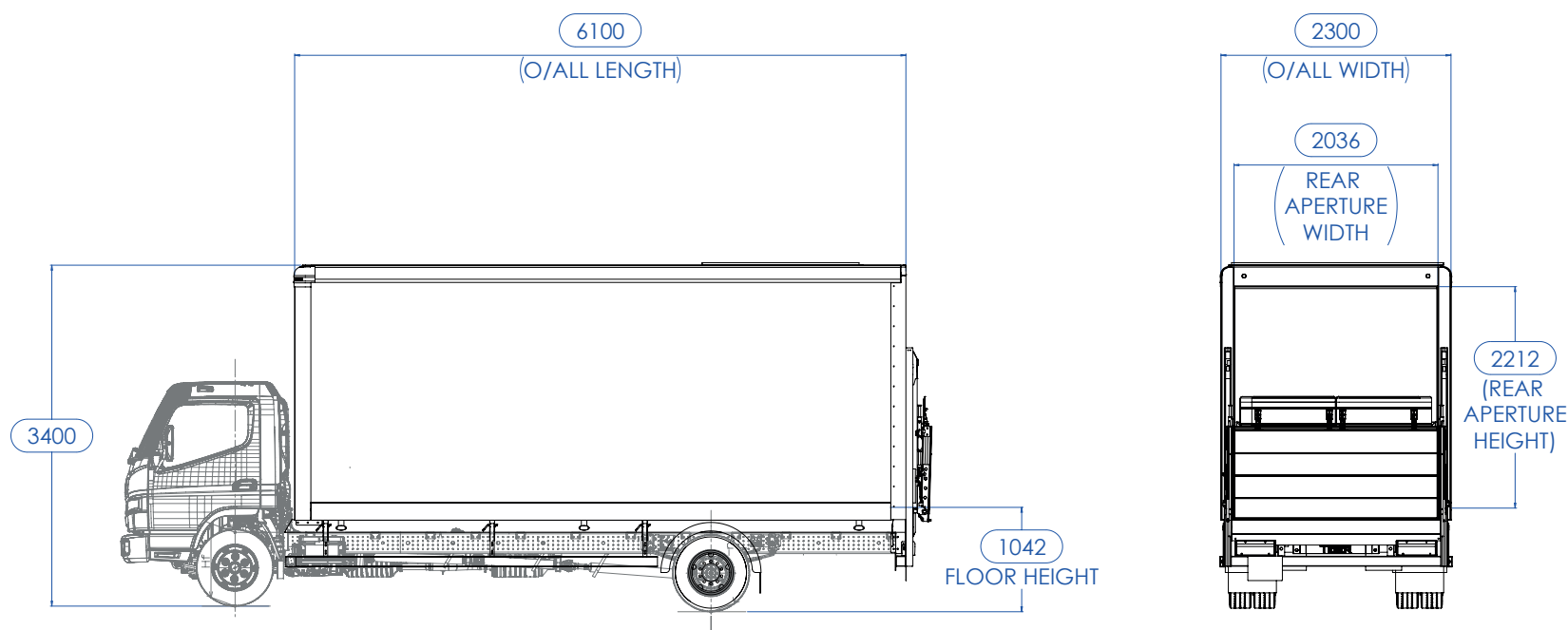


Diagram is for illustration purposes only; individual Rigid Bodies designed to customer specifications.

## Standard features



Galvanised chassis runners



Aluminium alloy bearers and side rave with concealed fastenings



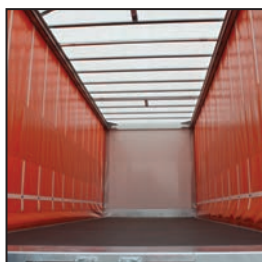
Fully bolted bodywork for ease of repair



Tiger front aerofoil



Hot-dipped galvanised rear frame with integral drain channel



21mm phenolic coated plywood flooring (18mm to 30mm floor options available)



17mm GRP side panels



200mm internal kick strip



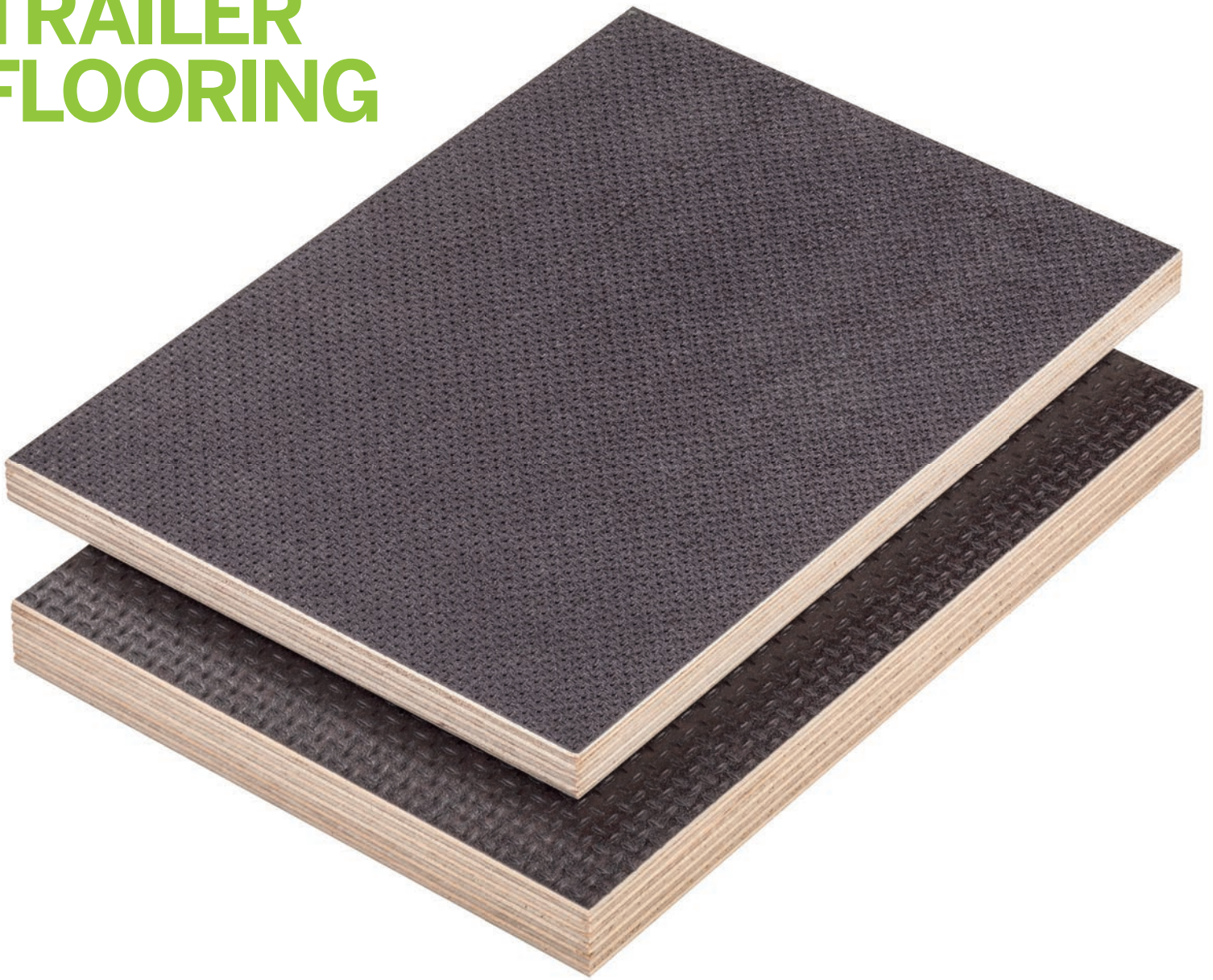
Thermo-plastic mudwings with spray suppression



Rear double or shutter doors



# SUSTAINABLE TRAILER FLOORING



## METSÄ WOOD PROVIDES:



Renewable  
Raw Material



Sustainability



On-time  
Deliveries



High Quality  
Plywood  
Products



Cooperation  
Values

Tiger Trailers use Metsä Wood's 'Floor 500' for their trailer flooring; a birch plywood with a wire mesh surface for heavy trailer applications, ready to withstand the daily grind of continual loading, unloading and constant wear on the road. Floor 500 has exceptional strength properties, is light in weight and has

an R13 slip-resistance, tested according to DIN 51130 to ensure excellent loading safety.

Floor 500 is PEFC-certified, meaning that the raw material is sourced from sustainably managed forests.

For more information visit  
[metsawood.com](https://metsawood.com)

Supplier to:



**MetsäWood**





# RIGID BODYWORK GALLERY











## CASE STUDY: HOVIS®

# Innovative, effective & safe Rigid

With over 1 million UK and Ireland-destined loaves departing from Hovis' eight bakeries and two distribution centres each day to a widespread network of stores large and small, vehicular and logistical efficiencies are key to the iconic firm's operations. Tiger Trailers' experienced design and engineering team rose to the challenge with their latest Rigid Bodywork solution for the 135-year-old baker.

Hovis, a long-standing customer of Tiger Trailers, has relied on the innovative manufacturer for trailers and Rigid Bodies of varying sizes since 2015, with around 30 Double Decks, 100 Box Van trailers and 200 Rigid Bodywork solutions delivered so far.

For this batch of 7.2t Rigid Vans, the brief was focussed on providing agility, efficiency, innovation and safety for the multi-drop environment and frequent kerbside deliveries in urban areas, that typify the vehicles' Cat C1 radial drivers' routes.

Based on an Iveco chassis, the key feature of Tiger Trailers' solution for Hovis is the incorporation of a 1100mm flush door on the nearside, with a step well for ground level access, enabling drivers to make kerbside deliveries in a way that boosts not only their own safety but that of other road users including cyclists. The step well has a gravity catch to retain the lower section in the raised position, a yellow handrail is fitted to the unhinged side of the footwell, and various other catches and buffers enhance operator safety further.







A delicate balance of galvanisation and lightweight components including a 3D Tiger aerofoil and side ears bring both strength and fuel efficiency to the chassis, and an alloy shutter and 500kg tail-lift provide access at the rear of the vehicle.

“Over the years, we have seen customers’ requirements evolve due to the changing nature of their operations. The increasing focus on agile deliveries in sometimes tight environments and on typically busy roads resulted in a welcome engineering challenge for Hovis that we are delighted our team once again delivered on”, comments Steven Cartwright, Tiger Trailers’ Joint Managing Director.

Inside, safety of Hovis personnel is again reflected through the specifying of a non-slip phenolic coated plywood floor, and interior lights that operate on a PIR sensor to provide effective illumination while reducing battery and fuel demands. Up front, a reverse sensor with an in-cab display helps to keep both drivers and those in the vicinity safe.

A number of Tiger Trailers’ Rigid Bodywork products for Hovis incorporate TRAILAR’s innovative solar technology suite, which includes a mat on the roof that utilises energy from the sun to power the vehicle’s ancillary systems.

Tony Stuart, Head of Logistics Operations Support at Hovis, says: “We have placed our trust in Tiger Trailers for several years and are very pleased with this latest batch of Rigid Bodywork solutions from their team, which are proving effective on our fleet and meet the objectives we set. Tiger always listens to customers’ requirements and their ongoing support instils confidence.”

- ✔ **This batch of Hovis Rigids feature a nearside door and step designed for kerbside deliveries.**
- ✔ **Operator and road user safety is boosted with non-slip flooring, high levels of lighting, plus reversing sensors.**
- ✔ **Innovative TRAILAR solar technology increases battery life and reduces fuel consumption and CO2 emissions.**







*"We have placed our trust in Tiger Trailers for several years and are very pleased with this latest batch of Rigid Bodywork solutions from their team, which are proving effective on our fleet and meet the objectives we set. Tiger always listens to customers' requirements and their ongoing support instils confidence."*

**Tony Stuart**  
Hovis' Head of Logistics Operations Support





**kloeckner metals**

UK

# YOUR SUPPLY CHAIN PARTNER

At Kloeckner Metals UK we carry a comprehensive range of ferrous and non-ferrous products and offer complete in-house processing solutions. From tube and flatbed laser cutting to bending, our processing expertise allow us to deliver cost efficient solutions and high quality steel products to trailer and commercial vehicle market.

We offer: flexible lead times, high-quality and consistent production, capacity to process large volumes of project work, provision of kits of parts ready for assembly, the ability to service contractual work and repetitive requirements.



Kloeckner Metals UK



@KloecknerUK



Kloeckner Metals UK

e: [enquiries@kloeckner.com](mailto:enquiries@kloeckner.com)

t: 0113 254 0711

[shop.kloeckner.co.uk](http://shop.kloeckner.co.uk)

[www.kloecknermetalsuk.com](http://www.kloecknermetalsuk.com)







## TIGER SIBERIAN

# Temperature-controlled range

2020 saw the launch of the Tiger Siberian range of temperature-controlled products for the chilled and cold chain market, each one tailored to the exact requirements of the customer.







A partnership three years in the making, the new Tiger Siberian range of temperature-controlled products combines the decades-long experience of two of Europe's leading manufacturers, Tiger Trailers and Lecitrailer, to offer a complete portfolio of trailer and Rigid Bodywork solutions for logistics, 3PL, retail and other operators in the chilled and cold chain market, from 7.5t Rigid through to innovative 44t Moving Deck Double Deck Trailers.

Since launching in the second half of last year, Tiger Trailers' range of refrigerated Box Vans under the Siberian brand has quickly attracted a list of customers synonymous with the market, among them a nationwide frozen food retail chain plus operators including Freshlinc, Moy Park and Willmotts Transport.







## A proven solution for the UK market

Tiger Trailers' engineering team has over 30 years' combined experience in the design of temperature-controlled bodywork for both trailers and rigid chassis and sought, following the manufacturer's relocation to an expansive, purpose-built and cutting-edge site including a showroom, to leverage the power of collaboration to offer the market an exciting new proposition.

"As a manufacturer known for being modern, innovative and bold, Tiger Trailers was the natural choice when it came to identifying an exclusive partner and representative for Lecitrailer in the UK with whom we could develop and evolve the range in a mutually beneficial way. We are delighted that the trailers

produced and supplied by ourselves and Tiger Trailers are already being operated by very well-known brands in the region", comments Guillermo Maestre, Lecitrailer's Export Director.







Alongside the single-temperature trailers initially launched under the Tiger Siberian brand, multi-temperature versions are now offered and are indeed in service for a well-known high street name in frozen foods in a deal through one of the world's largest 3PL firms, fitted with Carrier Vector HE 19 MT fridge units and solar technology.

"With award-winning Lecitrailer's years of experience, thousands of their reefer semi-trailers on the road and their highly respected reputation on the Continent, we are proud to offer the UK market a fresh and innovative solution in the form of our Tiger Siberian temperature-controlled range", remarks Steven Cartwright, Joint Managing Director of Tiger Trailers.

He adds: "Operators are increasingly looking for flexibility so it was a straightforward strategic decision to make our partnership's refrigerated trailers available for short to long-term hire through Tiger Rentals in parallel to the other financial solutions offered by Tiger Finance."







The two firms' senior management teams and various departments work together closely.

The new generation of Lecitrailer reefer semi-trailers has just been awarded the accolade of semi-trailer of the year in Spain, which the manufacturer also won four years ago, reinforcing its highly-regarded reputation.





All processes are undertaken in house, including panel manufacture, assembly, body and fridge unit fitment.

As with other Lecitrailer products, the chassis are treated with a cataphoresis process that ensures a uniform coating over the entire surface, with a thickness of 50 microns KTL (e-coat), which they cite as the best anti-corrosion system on the market, with guaranteed anti-perforation.



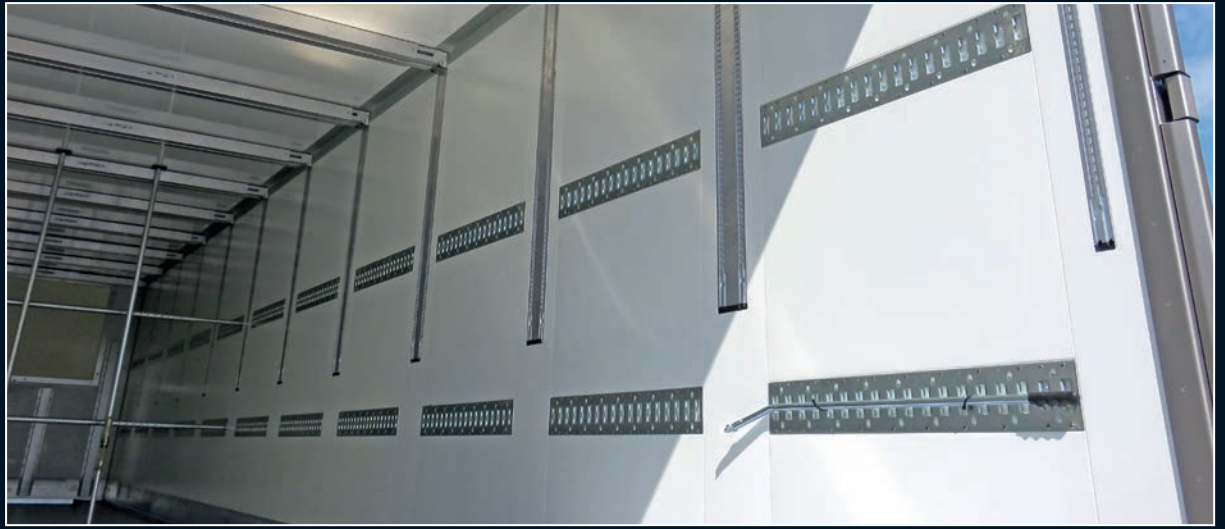




# TIGER SIBERIAN GALLERY















# SWAP-BODY SYSTEMS

- EN 12642-XL compliant
- Range of Swap-Body systems to suit specific customer requirements
- Suitable for both new or existing demountable systems
- Designs can incorporate Box Van, curtain and drawbar options
- Services include fitting tow hitch and tail-lift
- Contact roll on and hydraulic/pneumatic clear lift designs available



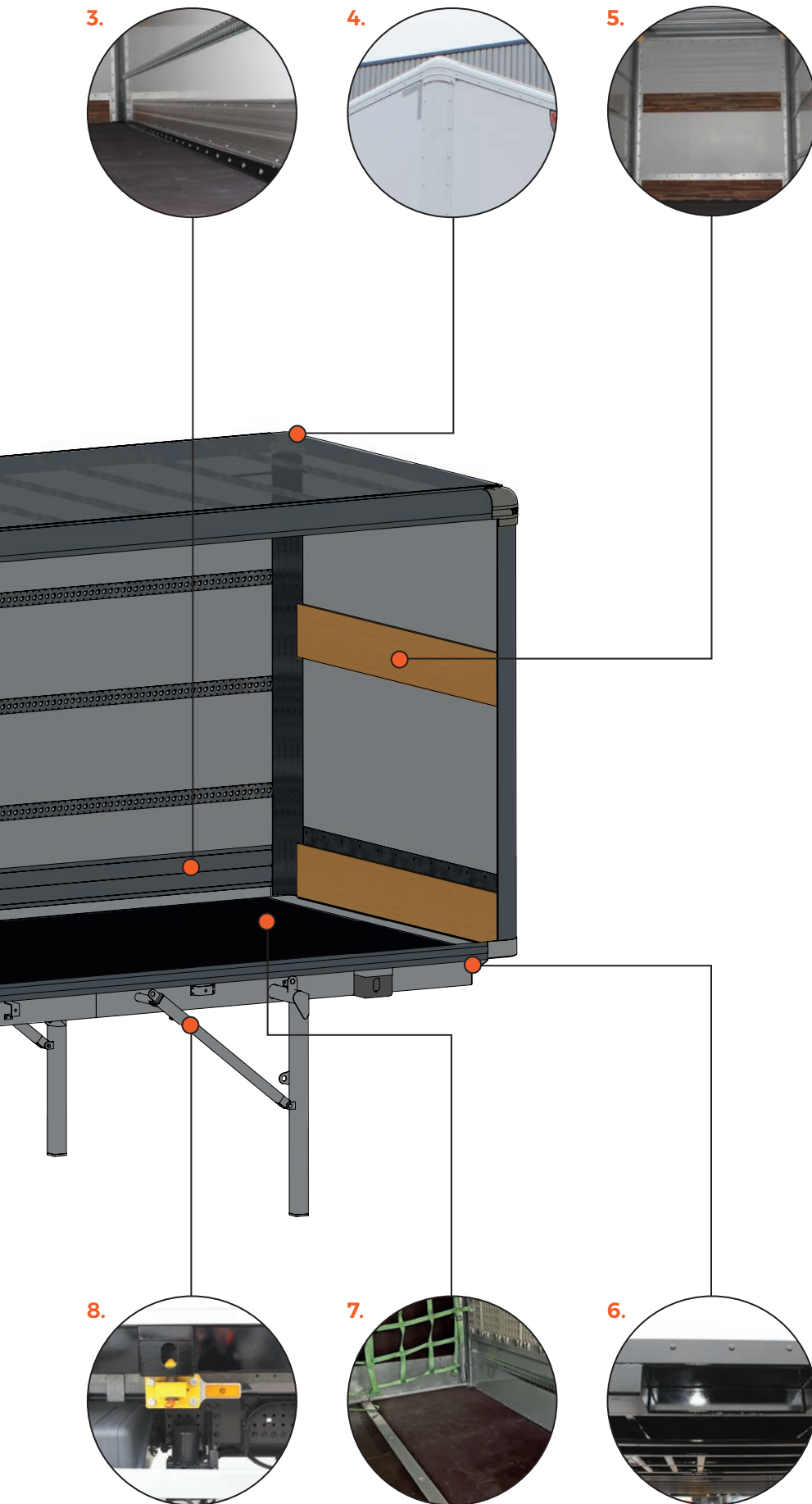


## PRODUCT FOCUS

# Swap-Body systems







## KEY

1. Galvanised door furniture
2. Load securing options: internal racking system
3. 230mm aluminium kick strip
4. Radius aluminium outer cappings and corner caps fitted externally to allow easy replacement
5. Hardwood buffer to front inner
6. Painted steel sub frame with steel front bulkhead up-stand
7. 21mm phenolic coated plywood floor with rear steel crash plate
8. Retracting location dishes and ISO-twist locks
9. Braced telescopic support legs
10. Anti-corrosive steel side rave with raised profiles
11. Rear pull-out ladder
12. Under-run incorporated with tail-lift
13. Thermoplastic mud-wings with spray suppression
14. Operator access strap

All Tiger's products are designed using 3D SOLIDWORKS™





# SWAP-BODY SYSTEMS

## Example below Box Van Demountable

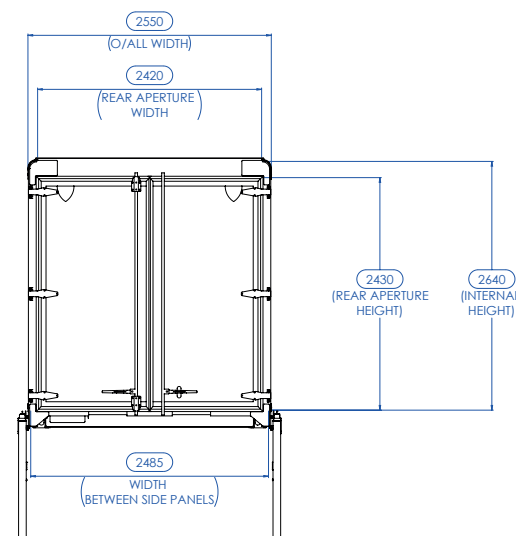
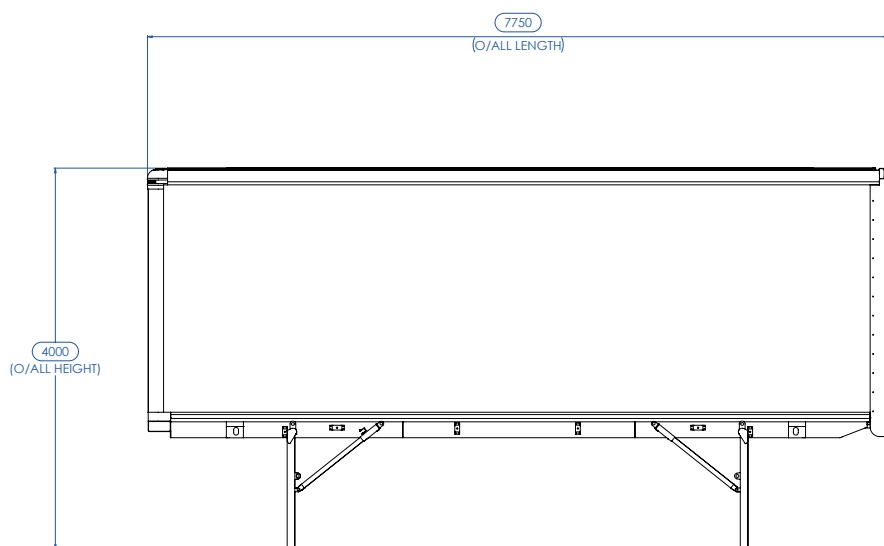


Diagram is for illustration purposes only; individual products designed to customer specifications.

## Standard features

### Demount subframe and bodywork



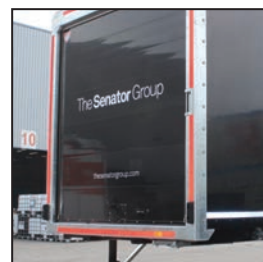
Pull out and drop down braced telescopic support legs with reflective tape



Choice of load stowage



21mm phenolic plywood floor



Galvanised frame



17mm GRP panels/ EN 12642-XL curtains

### Chassis installation



Galvanised steel sub frame with steel front bulkhead up-stand



Retracting location dishes and ISO twist locks to suit new/ existing equipment



LED side and rear marker lights



Thermoplastic mud-wings with spray suppression



Option for tail-lift or tow hitch





# Tiger Finance

## The complete package

Funding a standard curtainsider or van trailer on an operating lease through Tiger Finance has wide-ranging benefits.

- Priority lead time on your order
- Warranty extension for the duration
- Parts costs discounted 20%
- Repair costs discounted 15%
- Delivery to a UK mainland location



### Bespoke operating lease packages for larger fleets

High-profile companies running sizeable fleets are recognising and experiencing the benefits of Tiger Finance's all-encompassing solutions.

The advantages of leasing directly through the manufacturer's in-house finance division include:

- Competitive pricing
- Lease up to 10 years inc. extended warranty
- Bespoke master terms & returns documentation
- Flexibility backed by comprehensive aftercare





# SWAP-BODY SYSTEMS GALLERY











## CASE STUDY: WREN KITCHENS

# Bespoke kitchens, custom Demounts

Delivering more than 2,000 kitchens a week to customers' homes across the UK, served by its own fleet of over 200 lorries, logistical efficiency is paramount to Wren Kitchens' operations. Tiger Trailers was awarded with the contract to manufacture twenty-five Demount Boxes, reflecting the two companies' shared focus on bespoke products.

Tiger Trailers was commissioned to design and build Wren Kitchens' Demount Boxes for prime mover and drawbar operation in a way that would enable them to interchange seamlessly with the retailer's existing fleet of trucks, trailers and other vehicles.

Transporting heavy and sizeable worktops along with cornices and a wide range of fittings and other items dictated the provision of tailored internal racking solutions - a task that Tiger Trailers' engineers embraced







as part of the manufacturer's close collaborative ethos with customers.

Tiger Trailers' Sales Director, Darren Holland, comments: "We are proud to have been able to meet these logistical needs of such a well-known household name with strong branding, a great ethos and range. Working with Wren Kitchens at their sites to gain an intimate understanding of their often large and heavy products in order to contribute to exceeding their customers' expectations was an enriching experience throughout. We thank the Wren Kitchens team for their business and look forward to supporting them."

The new 'kite' load restraint system that Tiger Trailers integrated to work in conjunction with stillages features a strong net that can be moved up and down the box flexibly. This results in multiple benefits for the customer, ranging from enhanced safety for

its operators and boosted protection for its products, to an ultimate increase in delivery efficiency.

Safety is placed at the heart of everything Wren Kitchens does, so Tiger Trailers incorporated coloured flooring to warn operators that they are approaching the rear of the Demount Box, to prevent them falling from height.

Lee Holmes, Wren Kitchens' Transport and Logistics Director, said: "We're always looking at ways to further enhance our delivery service with our customers at the heart of everything we do, and our fleet of bespoke demountable lorries are key in creating an even more efficient and flexible offering."

The Demount contract formed a part of the wider fleet replacement and enhancement programme that Tiger has been involved with. This includes Demount Vans, installations, Single Deck Semi Trailer Vans and Double Deck Curtainsiders.



- On the road five days per week, the new Rigid's each make an average of five daily drops, operated by two-person crews
- Up to two trailers' worth of waste sawdust and cuttings is recycled each week in rural projects by farmers and landscapers local to Wren in North Lincolnshire
- Wren Kitchens won the Operational Excellence Award at the Motor Transport Awards 2019.





*"We're always looking at ways to further enhance our delivery service with our customers at the heart of everything we do, and our fleet of bespoke demountable lorries are key in creating an even more efficient and flexible offering."*

**Lee Holmes**

Wren Kitchens' Transport & Logistics Director





# Goodyear TPMS. Keeping your vehicle on the road.



85% fewer  
tyre related  
incidents\*



Reduced vehicle  
downtime and  
breakdown costs



Increased  
tyre  
mileage

The Goodyear TPMS solution helps you to make appropriate decisions in order to avoid tyre-related incidents and plan maintenance efficiently. The rim-fitted sensor collects and monitors tyre pressure and temperature data to detect under inflated tyres, air leaks and mechanical issues. The G-Predict technology analyses data, flagging any potential incidents before they become a tyre issue; using mobile and desktop alerts and user friendly reporting.



# KMAX T GEN-2. Excellent mileage under all-season conditions.



## *The KMAX T GEN-2*

The new KMAX T GEN-2 trailer tyre is designed for excellent mileage under all-season conditions and for various types of roads and applications.

It features the 3PMSF marking for full compliance with the latest and future winter tyre requirements. Deep sipes provide short braking distances and improved wet grip throughout tyre life. The robust tread design results in enhanced damage and wear resistance.

Discover how innovative the next generation KMAX T GEN-2 is at [truck.goodyear.eu](http://truck.goodyear.eu)

For further information email [uk\\_marketing@goodyear.com](mailto:uk_marketing@goodyear.com)  
quoting **Tiger20**.

**GOODYEAR**









# SPECIALIST

Tiger Trailers offers a tailored design and build service for customers with very specific requirements. Taking a pencil and paper approach, we utilise the skill and experience of our design team to offer a complete range of fully bespoke Specialist Trailers.

- Flatbed trailers
- Chipliners
- Walking floor trailers
- Roller floor trailers
- Cylinder carriers
- Coil carriers
- Fork lift carriers





# SPECIALIST GALLERY











# TIGER TRAILERS DECK POD



Patent applied for

## TIGER TRAILERS DECK POD™

Tiger Trailers are the UK's only trailer chassis and body manufacturer to also provide a loading and unloading system for both single and double deck trailers.

The company has utilised its extensive industry knowledge in the design and manufacture of moving deck trailers to create a complete loading solution designed to exact customer requirements.

The Tiger Trailers Deck Pod™ loading solution enables faster loading and unloading times compared to its competitors, thanks to:

- ♥ A wider internal platform lift, allowing for double the quantity of pallets to be loaded on the deck in one lift (14 at a time, with room for the operator)
- ♥ A hydraulic, telescopic bridge plate allowing for level loading of each deck
- ♥ Warehouse level access to the Deck Pod, requiring no decline ramp to begin loading
- ♥ The Deck Pod maximising use of space, with a narrower external width than competitor products, thereby requiring only one standard warehouse bay.





*"Tiger Trailers are the UK's only trailer chassis and body manufacturer to also provide a trailer loading and unloading system for both single and double deck trailers. Each Tiger Trailers Deck Pod can be designed to suit customers' exact sizes and individual requirements."*

**Darren Holland**  
Sales Director, Tiger Trailers

The Tiger Trailers Deck Pod is easier and safer to use than alternative loading solutions. with:

- ♥ Improved lighting through translucent cladding, using natural light to create a better working environment for the operator
- ♥ LED indicator lamps to alert the operator to the position of the deck, bridge plate and gate
- ♥ Simple, easy to use operator switches with LED indicator lamps
- ♥ Incorporation of several safety features, including emergency safety gates and end guards (to prevent underneath access).

The Tiger Trailers Deck Pod is designed as a long-term, cost-effective load solution, requiring less maintenance, which in turn saves time:

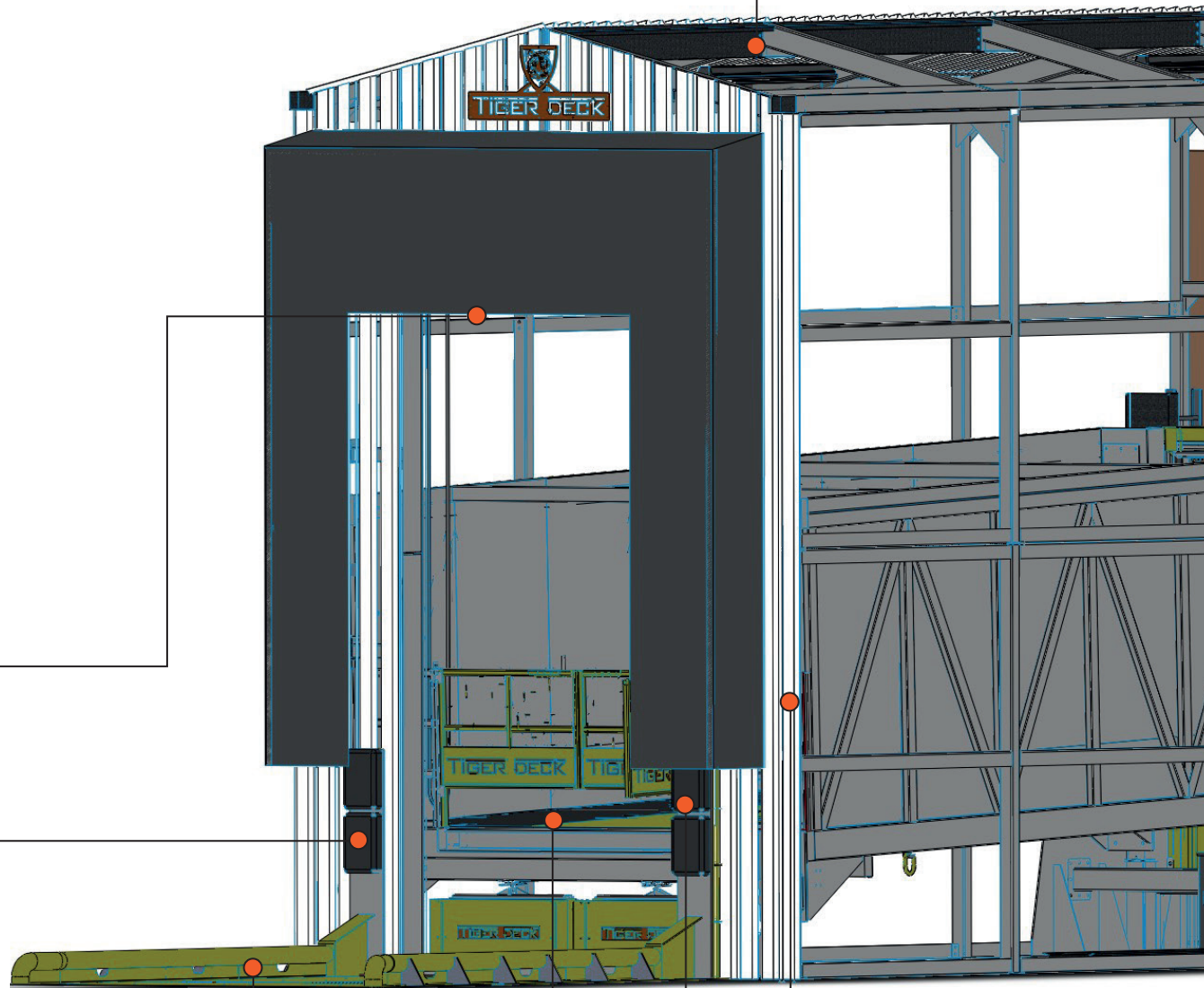
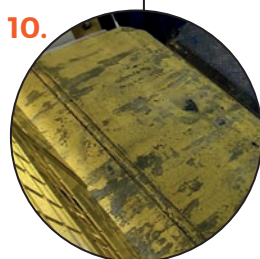
- ♥ The hydraulic direct-drive four-ram lift system incorporates a simpler design than more traditional rope and pulley variants – meaning less wearing of parts and a reduction of lifetime maintenance costs
- ♥ Comprehensive training is supplied to end user operators, along with dedicated manuals and SSOWs
- ♥ Offer of 12-month inclusive service package, along with Tiger 24/7 breakdown support.



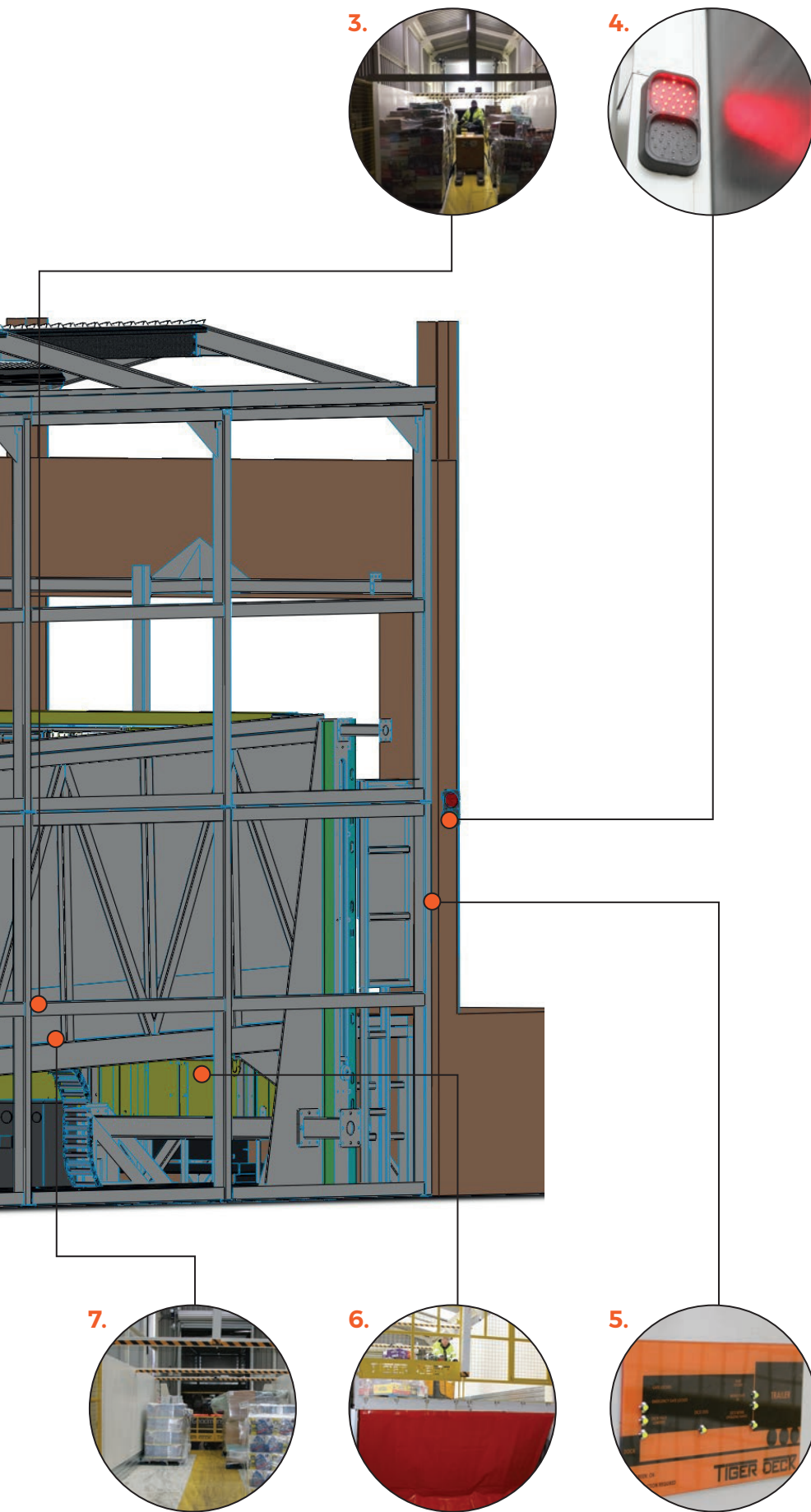


## PRODUCT FOCUS

# Tiger Trailers Deck Pod™







## KEY

1. Suitable for any trailer type
2. Integral drainage system within roof design
3. 14 pallet load capacity, with PPT pallet truck
4. Safety trailer-sense stop with traffic light system
5. 15,000kg deck capacity, with load monitor system
6. Hydraulic, direct-drive, four-ram lift system
7. Hydraulic self-levelling of the deck when uneven distribution of load
8. LED indicators and simple switch operator panel
9. Power to operate trailer tail-lift
10. Telescopic, levelling bridge plate
11. Wheel guides to control trailer positioning
12. Heavy duty buffers to cushion trailer impact
13. Electro-powered roller-shutter door

All Tiger's products are designed using 3D SOLIDWORKS™





# TIGER TRAILERS DECK POD GALLERY







# We do far more than just sell great products.



**ALEXRIMS**  
TRUCK AND TRAILER WHEELS



At IMS, we've built our business on the basis of listening carefully to fleet operators, trailer builders and associated support industries to identify, distribute and support products that really work for them. As a result, we have some exceptional, class-leading brands in our portfolio. But we go much further than that. We consult with customers to create bespoke solutions helping them compete and thrive in a diverse, challenging market facing increased pressure on margins, tightening legislation and concern for protecting the environment. **IMS is different – IMS listens. Talk to us and we'll help you deliver.**

IMS Limited Trans Tech House Shepshed LE12 9NH t: +44 (0)1509 600 185 w: [www.imslimited.com](http://www.imslimited.com) e: [info@imslimited.com](mailto:info@imslimited.com)



**ALEXRIMS**  
TRUCK AND TRAILER WHEELS







## PERSONALISATION

# Comprehensive options to meet every customer's requirements

From aerodynamic components that contribute to reducing fuel spend, and load-securing systems adapted to various types of cargo, to safety features and even aesthetic upgrades such as dynamic indicator lights, Tiger Trailers and its account managers ensure that each customer's unique needs are catered for with an unlimited range of product personalisation options.





GRP aerodynamic sideguard system



Tiger aero blimp



Rear roof diffuser



Rigid cab aero



Aerodynamic sloping front

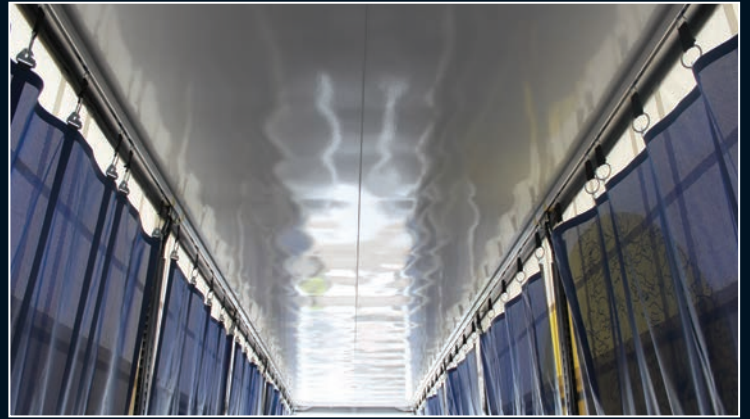


Lifting roof

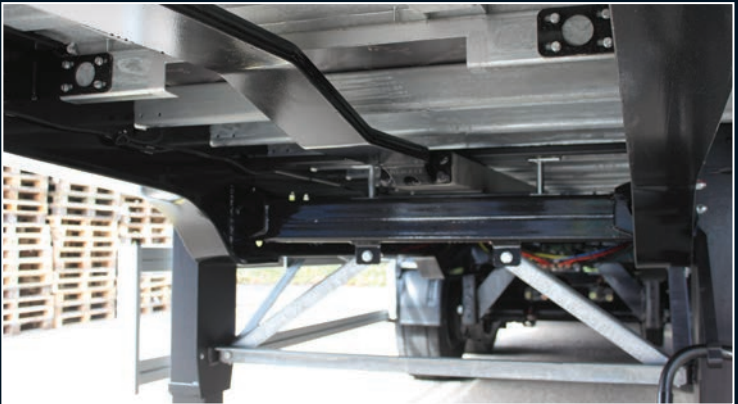




GRP translucent roof panel



Insulated roof



Command rear steer axle



Galvanised chassis



Standard nosebox



Sliding nosebox (ground level access options available)



Lightweight chassis





Flush doors with recessed lock handles



Flush side access door



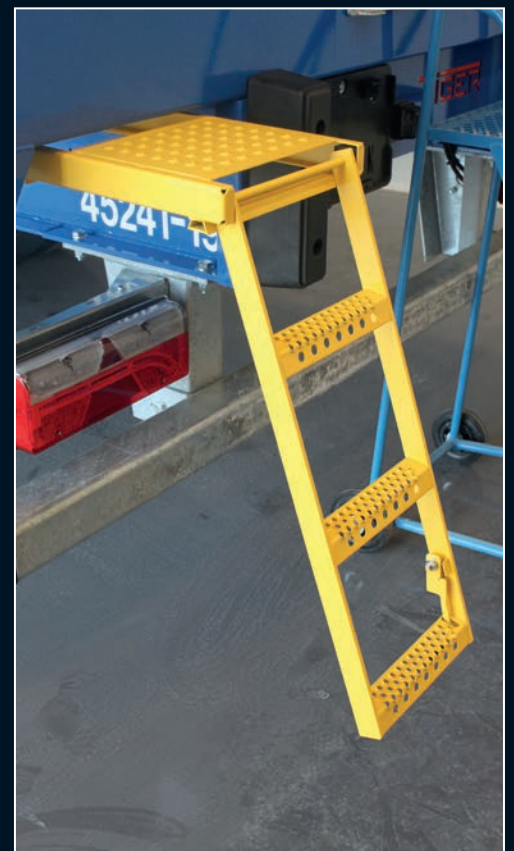
Side storage options



Side access door



Shutter door



Pull-out step





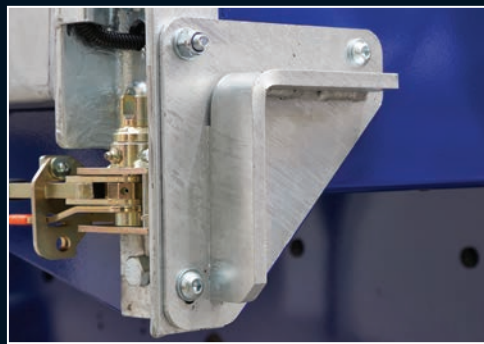
High security galvanised steel roof



Galvanised rear under-run bar



Reverse sensors



Steel buffer



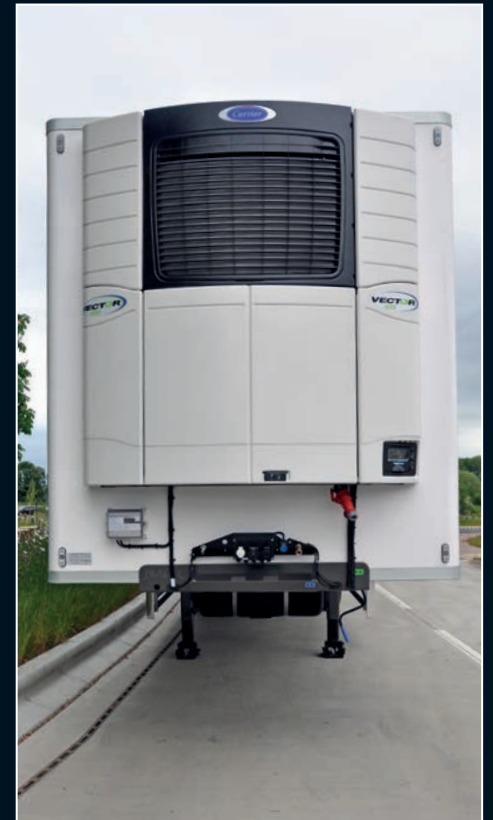
High impact plastic buffers



Column twin tier tail-lift



Retractable tail-lift



Refrigeration unit fitment





Crit floor



Full treadplate floor



Lamideck floor



Roller-track floor



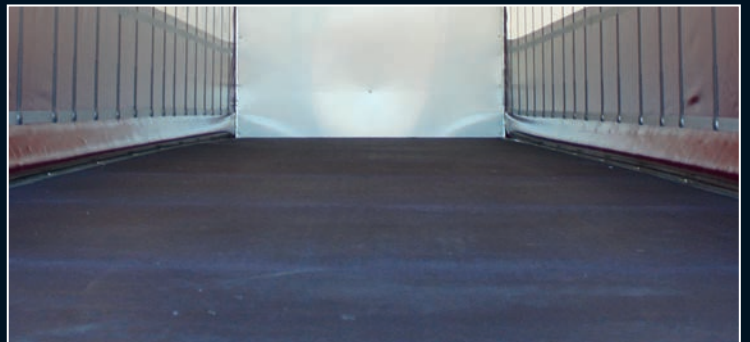
Omega Floor



Aluminium floor for temperature-controlled trailers



Flush Floor



Over-floor





Side guard infill branding/safety notices



Control panel for Moving Deck Double Decks



NuVech Solutions 'AirBar' self-inflating LED safety barrier



Tyre pressure monitoring system (TPMS)

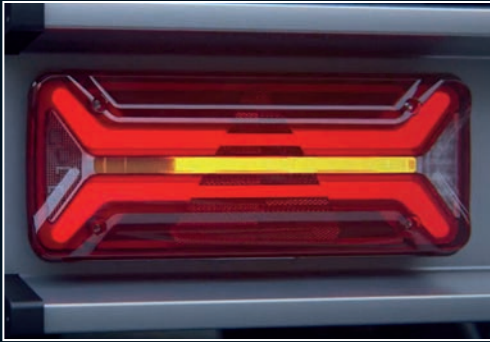


Rear-view camera

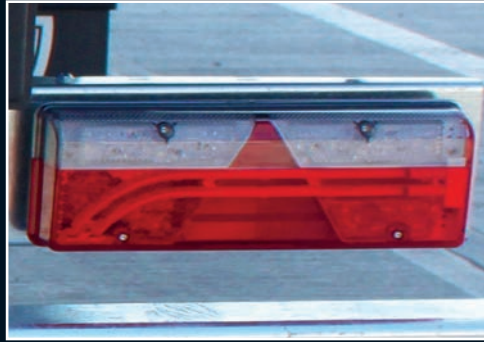


Digital print livery

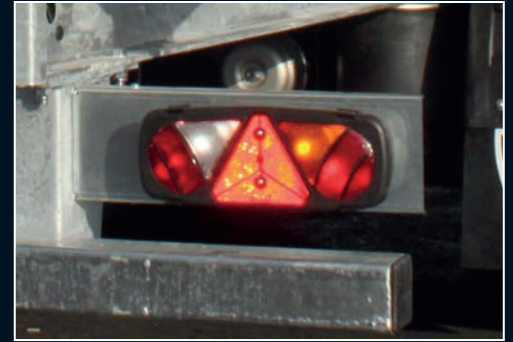




Aspöck ECOLED II



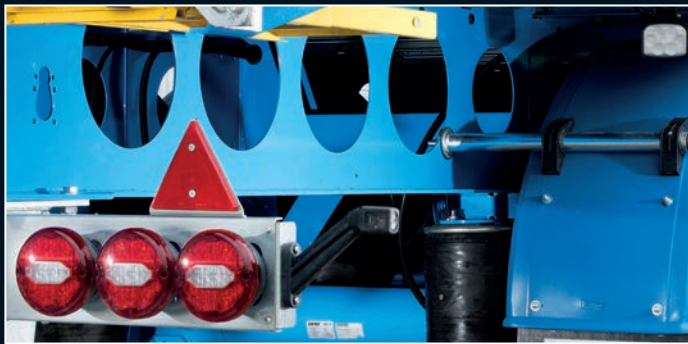
Aspöck EUROPOINT III



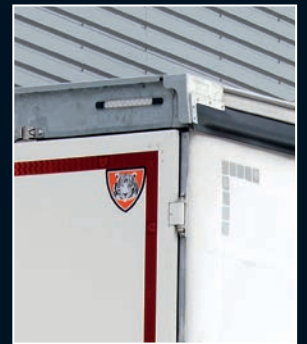
Truck-Lite M800



Truck-Lite M900



Outline markers | reverse work lights | 'burger' lights



Multifunction top markers



Aspöck MULTILED III



Interior LEDs



Full-length LED lighting



Additional LED work lights



Retractable tail-lift



Tuckaway tail-lift





Pull-down load restraint system



Rear door load strap pockets



Insuliner bespoke load securing



Pull-down net system





Sliding pillar and side cabbage boards



Keg load restraint



Load pole stowage



Internal racking



Wrap-around curtain





# Tiger Rentals

Tiger Rentals provides invaluable support to customers by offering short, medium and long-term hire and rental solutions across the full range of Curtainsider, Double Deck, Box Van, refrigerated/temperature-controlled and other trailer types.

With the ability to manufacture new hire trailers to customers' specific requirements, and with sites in both the north west and south west of the UK, Tiger Rentals is well-equipped to react quickly to fulfil operators' needs.





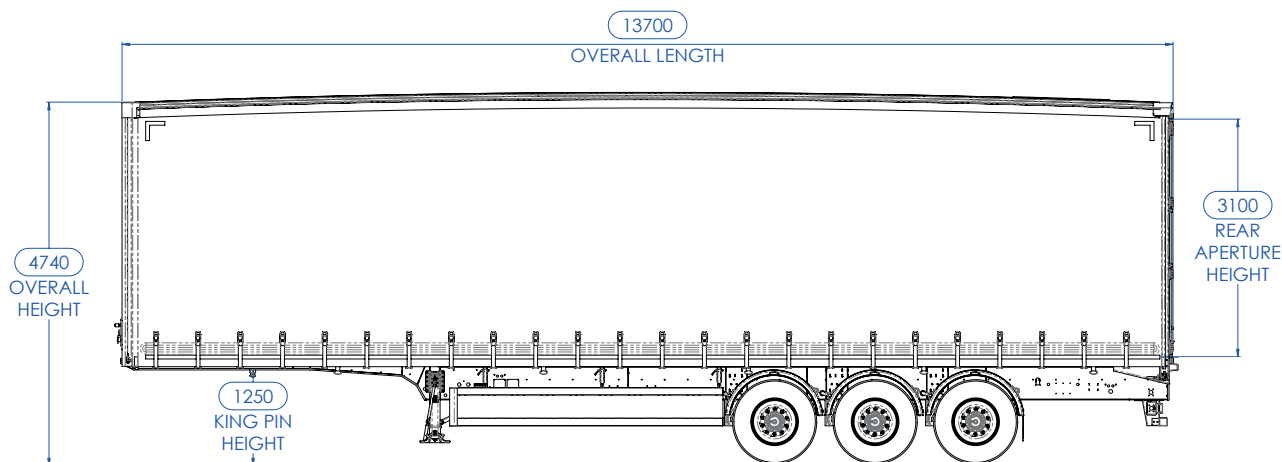




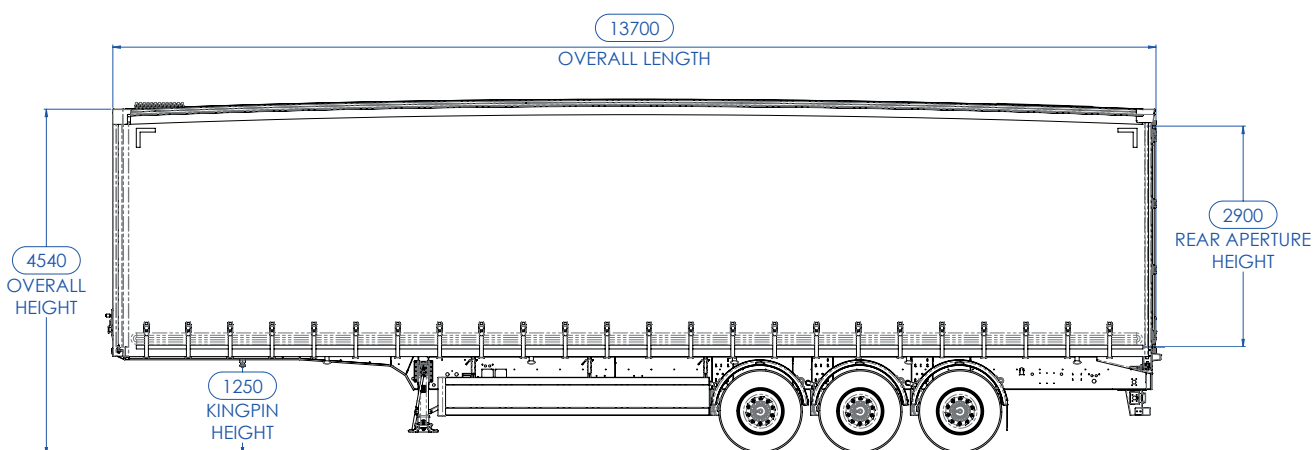


## PRODUCT FOCUS

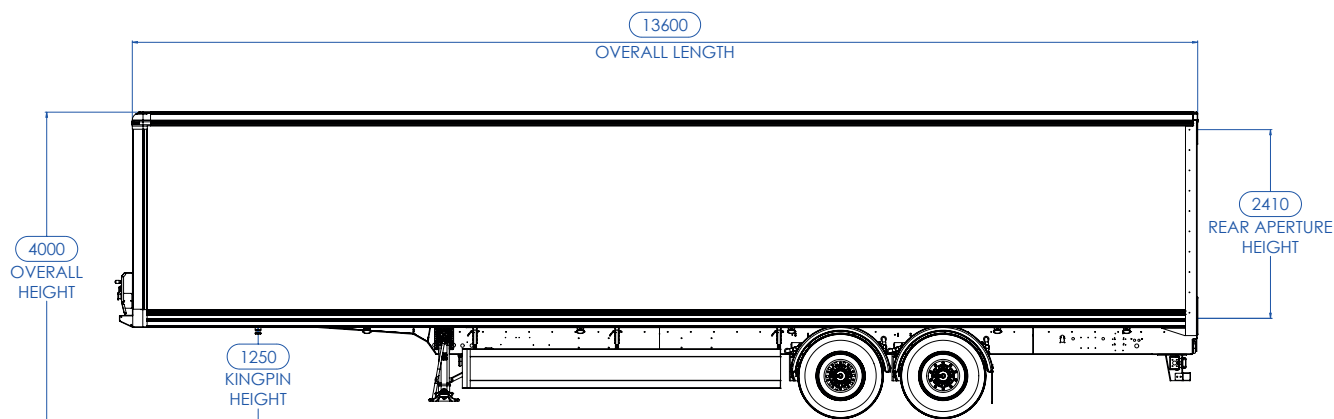
# Short and long-term rental fleet



**Curtainsider (4.74m overall height)**

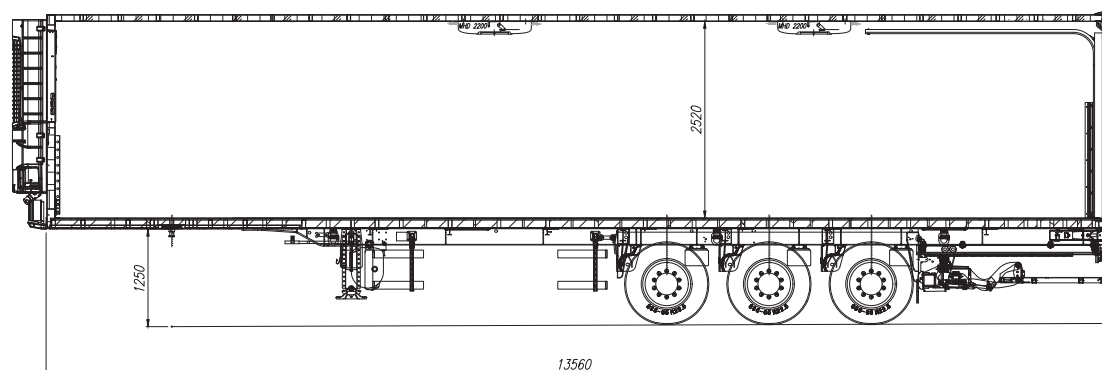


**Curtainsider (4.54m overall height)**

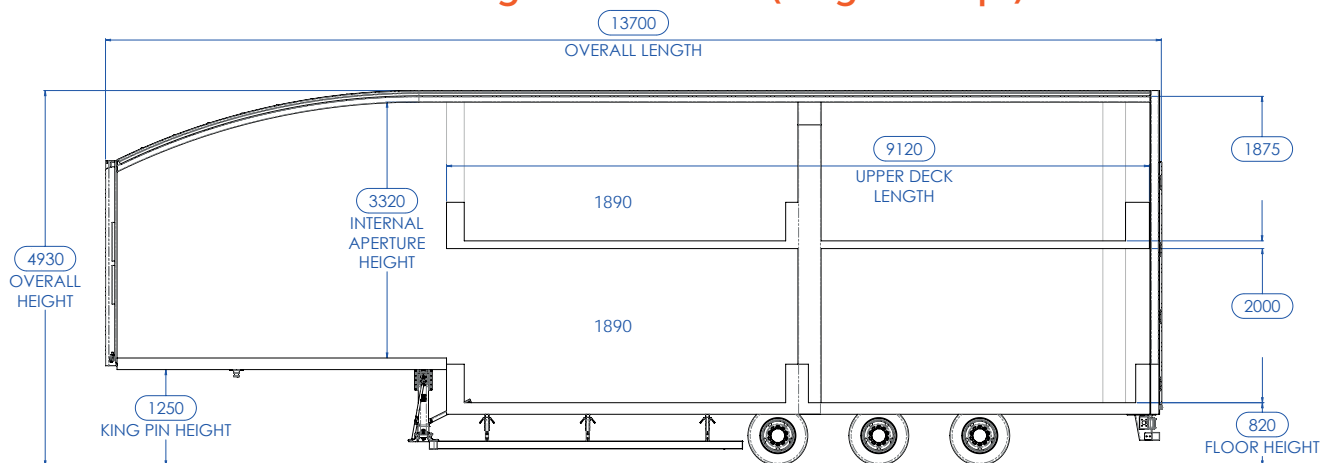


**Box Van (4m overall height)**



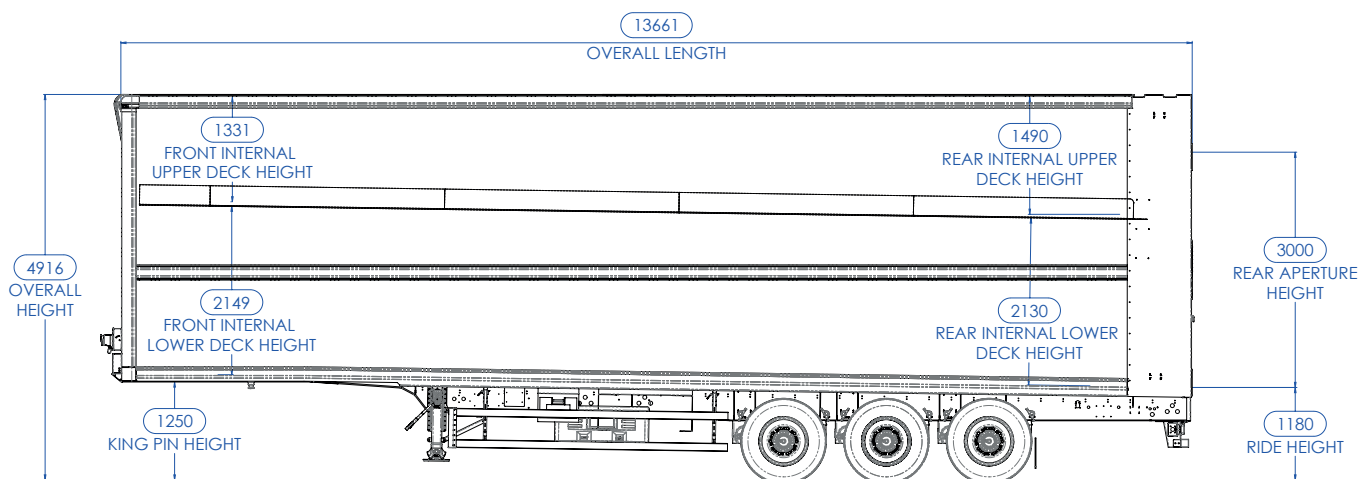


**Refrigerated trailer (single temp')**



**Double Deck (¾ Moving) Curtainsider**

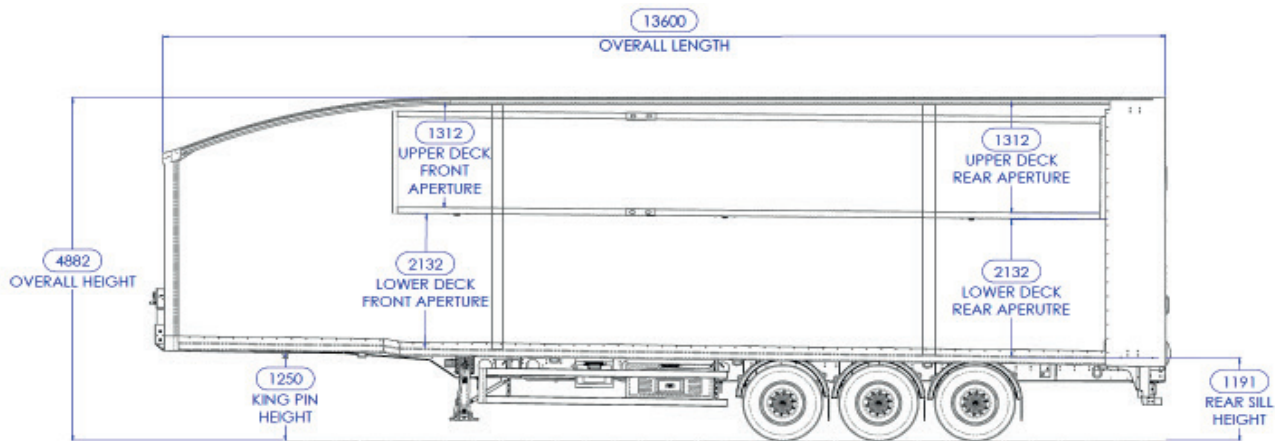
Curtainsider stepframe | double rear doors



**Wedge Van (Full Length)**

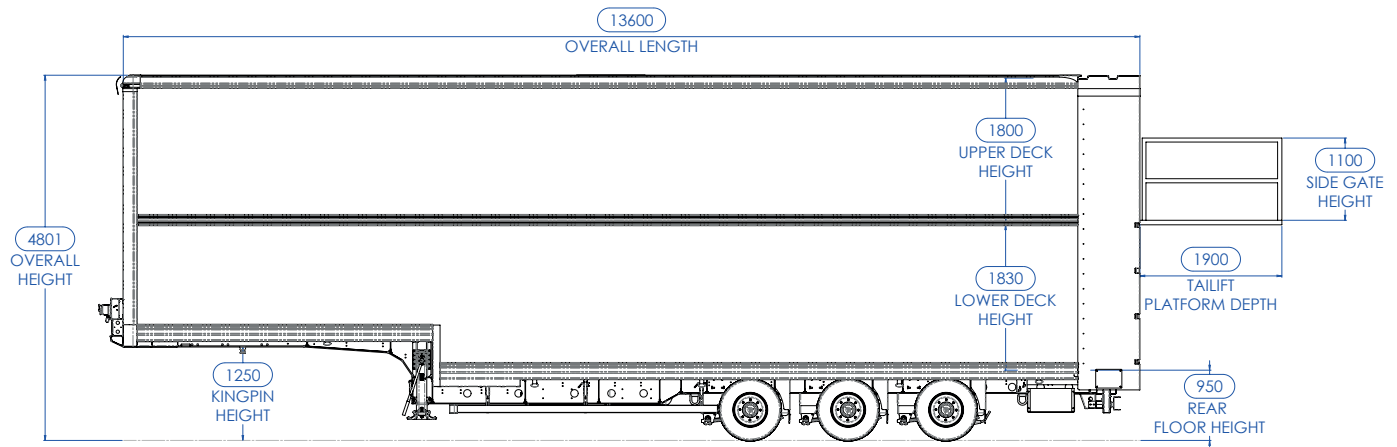
Shutter rear door





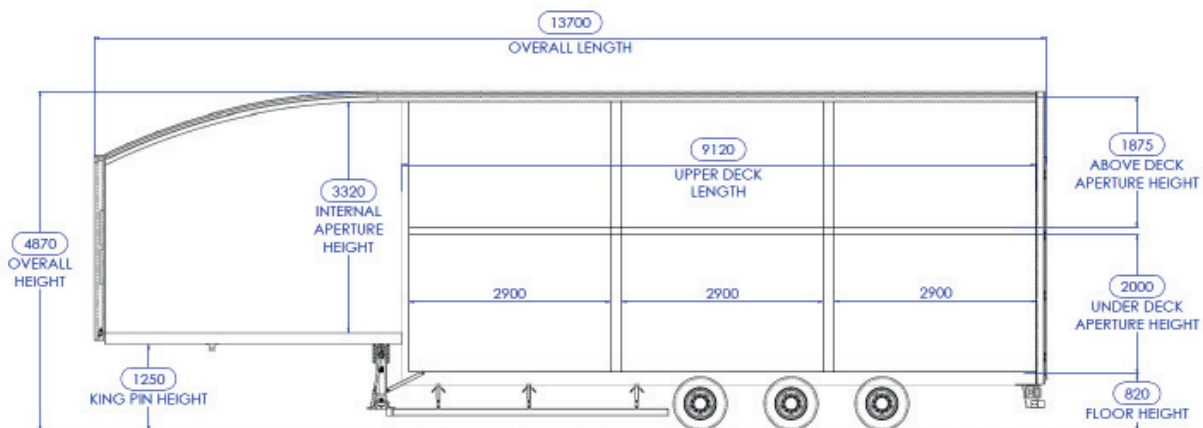
### Wedge Van (¾ Moving Deck)

Shutter rear door



### Stepframe Fixed Double Deck

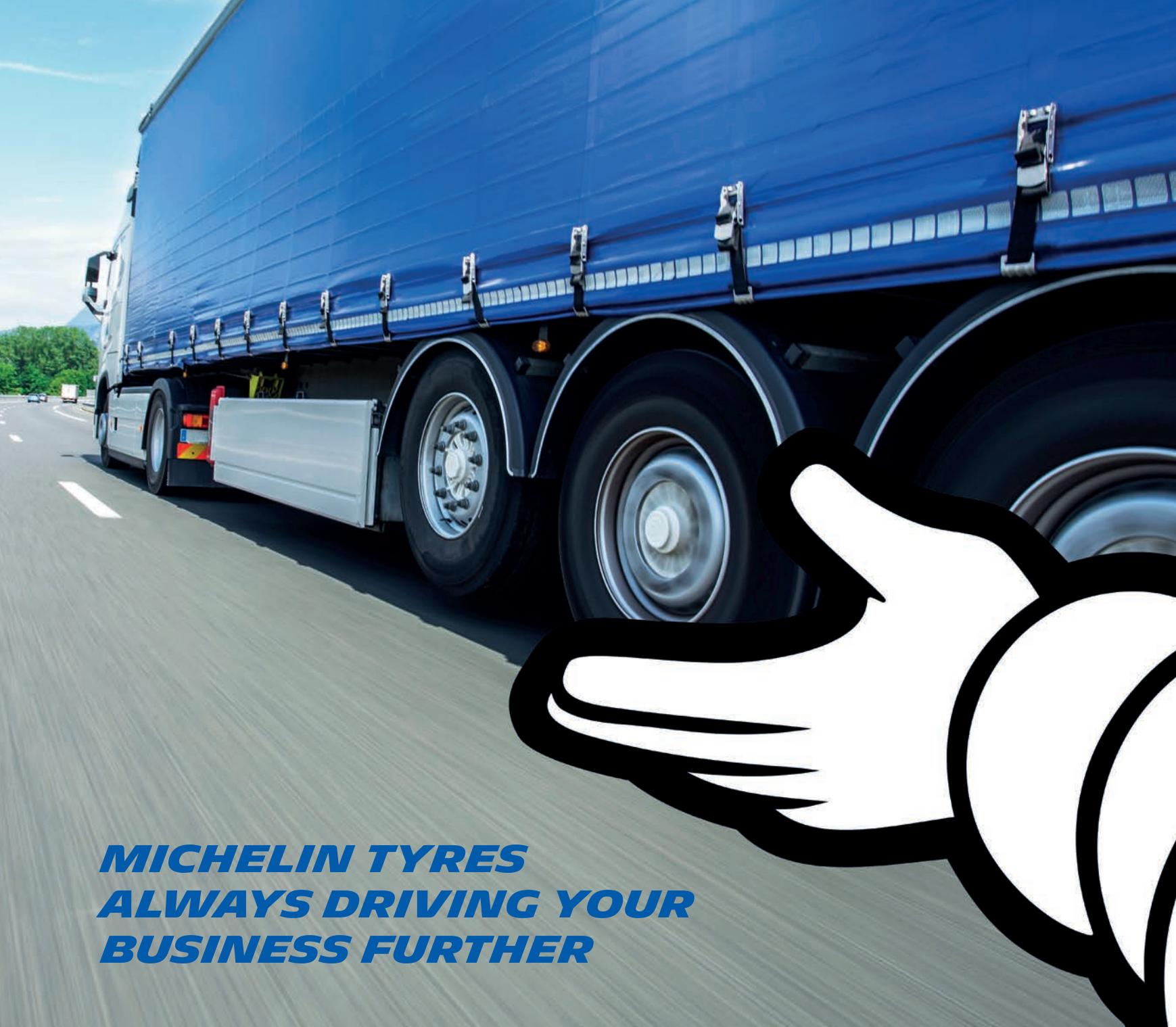
Full length with twin tier rear tail lift and double doors



### Double Deck (¾ Fixed Deck)

Curtainsider stepframe | double rear full height doors





***MICHELIN TYRES  
ALWAYS DRIVING YOUR  
BUSINESS FURTHER***



Michelin X<sup>®</sup> Multi<sup>™</sup> tyres - Safety for your drivers, your load and for other road users in all weather conditions.  
Now available to specify as original equipment on Tiger Trailers.

All Michelin X<sup>®</sup> Multi<sup>™</sup> tyres come with the X<sup>®</sup> Multi<sup>™</sup> Damage guarantee – visit [trucks.michelin.co.uk](http://trucks.michelin.co.uk) for more information.







# Tiger Finance

Removing the traditional separation between trailer manufacturer and funding solutions, Tiger Finance presents customers with one of the most cohesive options on the market. The team behind Tiger Trailers' in-house finance division possess over 65 years' combined experience specifically in funding for the transport and logistics sector and have facilitated the acquisition of more than 30,000 trailers and 10,000 trucks.

Tiger Finance can create bespoke financial solutions based on individual requirements, from a single trailer to a fleet of several hundred. With access to a panel of funders supporting the Tiger product, our team has arranged finance packages for many household name retailers, plus a large number of major hauliers, and is able to act entirely independently and expediently.

## Bespoke operating lease packages

Offering fixed-cost control and tax-deductible charges, an operating lease combines the benefits of owning an asset with the attraction of lower-cost monthly rentals, whilst also keeping the asset off your balance sheet. Monthly rentals are paid in exchange for use of the asset. At the end of the agreement the trailers can simply be returned to Tiger, or a lease extension agreed at a reduced cost.

High-profile companies running sizeable fleets, from supermarkets and parcel operators to furniture brands and international logistics firms, are increasingly recognising and experiencing the benefits of Tiger Finance's all-encompassing solutions, with full operating lease financing becoming the preferred choice for facilitating the addition of large product orders.

Tiger Finance regularly collaborates closely with customers in arranging and managing packages for 100+ trailers, often including innovative Moving Deck Double Decks, with financing in place for up to ten years.

In addition to competitive pricing, another advantage of leasing directly through the manufacturer's in-house finance division is the way in which bespoke documentation such as master operating lease agreements and return conditions can be facilitated, along with greater flexibility in scheduling and other aspects.

- Up to 10 years' lease and extended warranty
- Bespoke master documentation
- Competitive pricing, flexibility and aftercare





## Finance lease

The trailer is owned by Tiger Finance for the duration of the lease, with rental charges covering the whole trailer cost over an agreed term. VAT is paid on each monthly rental and at the end of the lease you can either extend the agreement, pay a nominal annual rental, or sell the asset and receive a rebate from the sale.

## Hire purchase

Following an initial deposit, the outstanding balance of the trailer is paid off on a weekly or monthly basis, with a fixed rate of interest over a fixed term. At the end of the agreement you are given the option to own the asset outright, paying an optional purchase fee (which is set out in the terms of the original agreement).





# Aftercare

Tiger Trailers firmly believes that when a customer purchases one of its products, a relationship develops that goes way beyond the handover when it rolls off the production line. The manufacturer's dedicated, round-the-clock aftersales service, provides comprehensive support to its customer base throughout the UK.







## Parts

Tiger Trailers stocks a broad range of OEM parts and can also supply customer-specific parts and other manufacturers' components on request. The team offers a 24-hour delivery service to any UK location.

## Warranty

The combination of its own service vehicles, along with a UK-wide network of authorised service agents, allows Tiger Trailers to provide a comprehensive range of services to all of its customers.

## Repair

Tiger Trailers offers both an on-site and factory repair service, along with a dedicated emergency breakdown service for urgent issues, helping to maximise operators' uptime and efficiency.















**TIGER**  
TRAILERS

Alan Cartwright House  
Road One, Winsford Industrial Estate,  
Winsford, Cheshire, CW7 3RL  
[tigertrailers.co.uk](http://tigertrailers.co.uk)  
01606 339 640